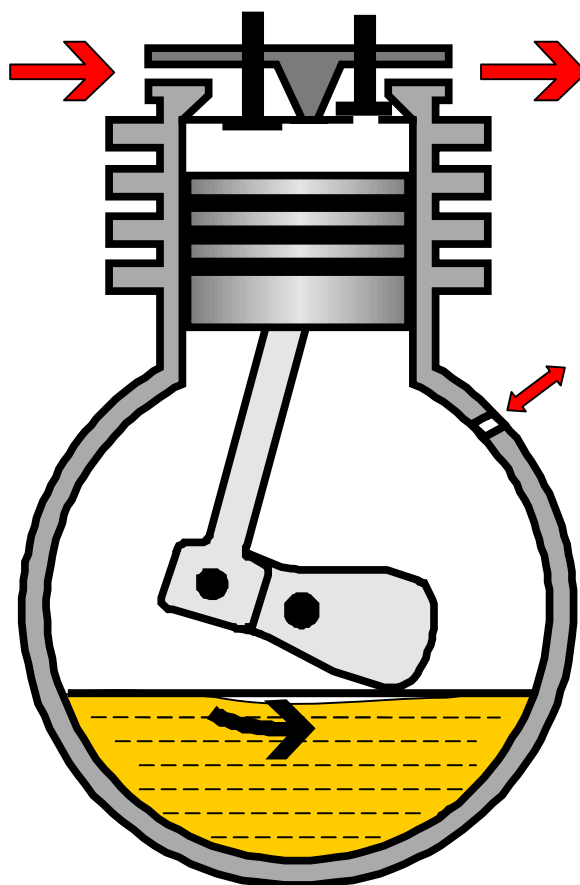
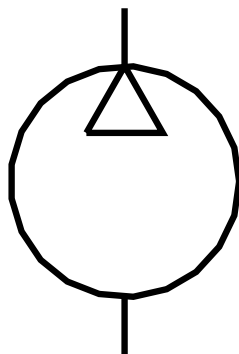
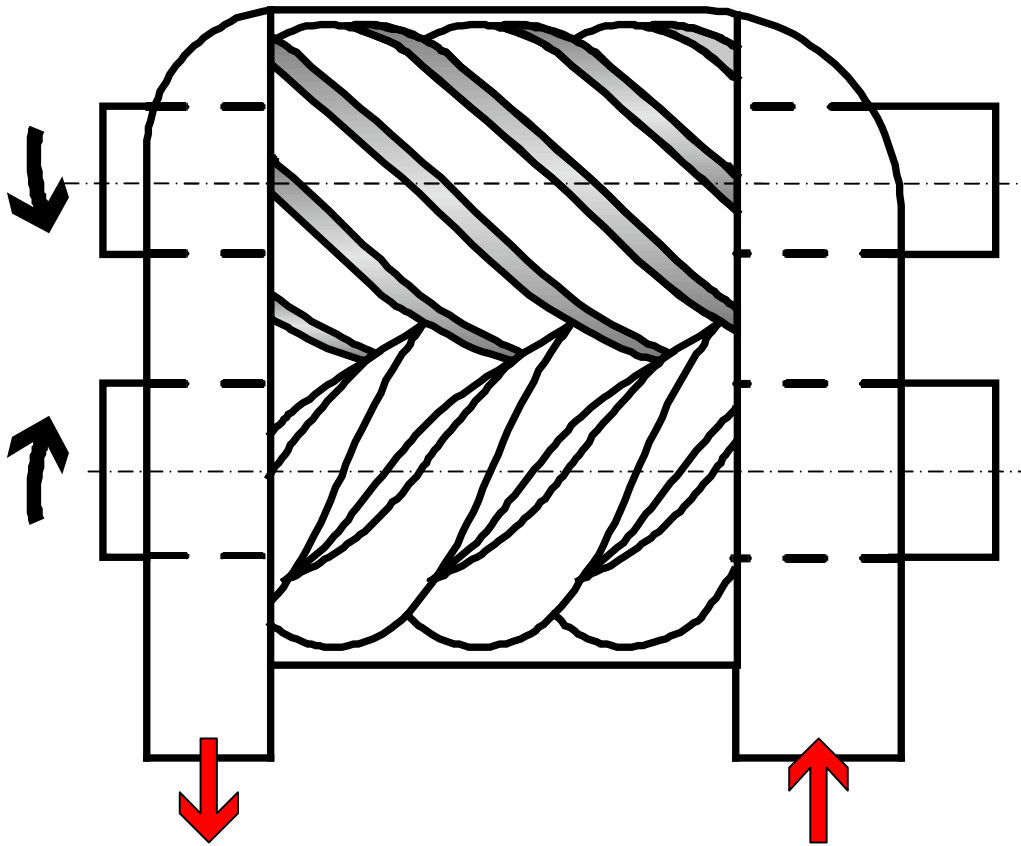
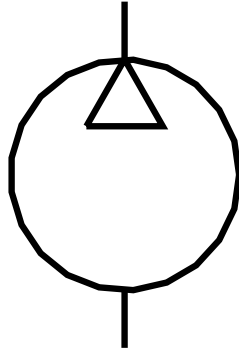


Egyszeres működésű dugattyús kompresszor

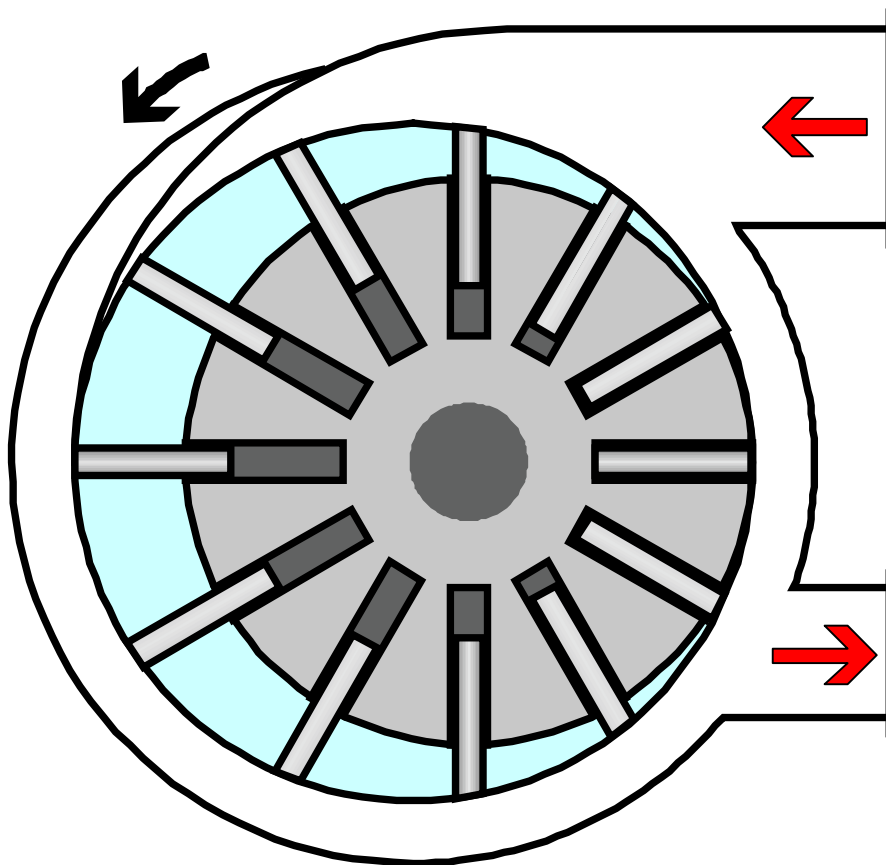
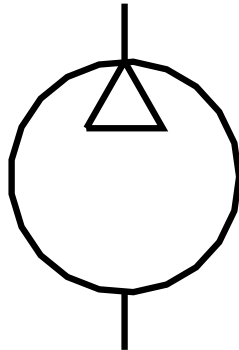


$$Q = D^2 \cdot \pi / 4 \cdot s \cdot n \cdot z \cdot i \cdot \eta$$

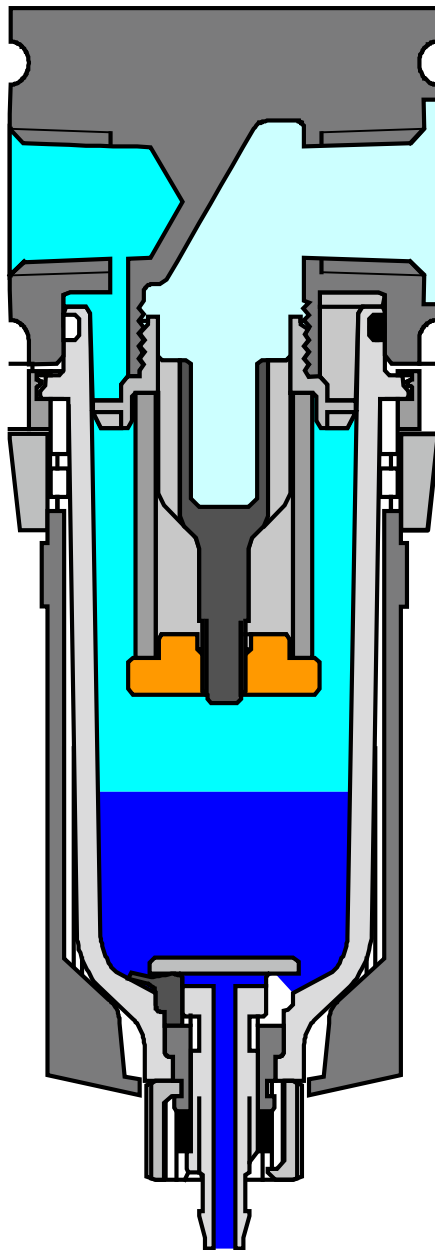
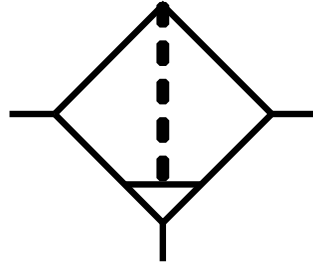
Csavarkompresszor



Csúszólapátos kompresszor



Szűrő-vízleválasztó (manuális leeresztés)



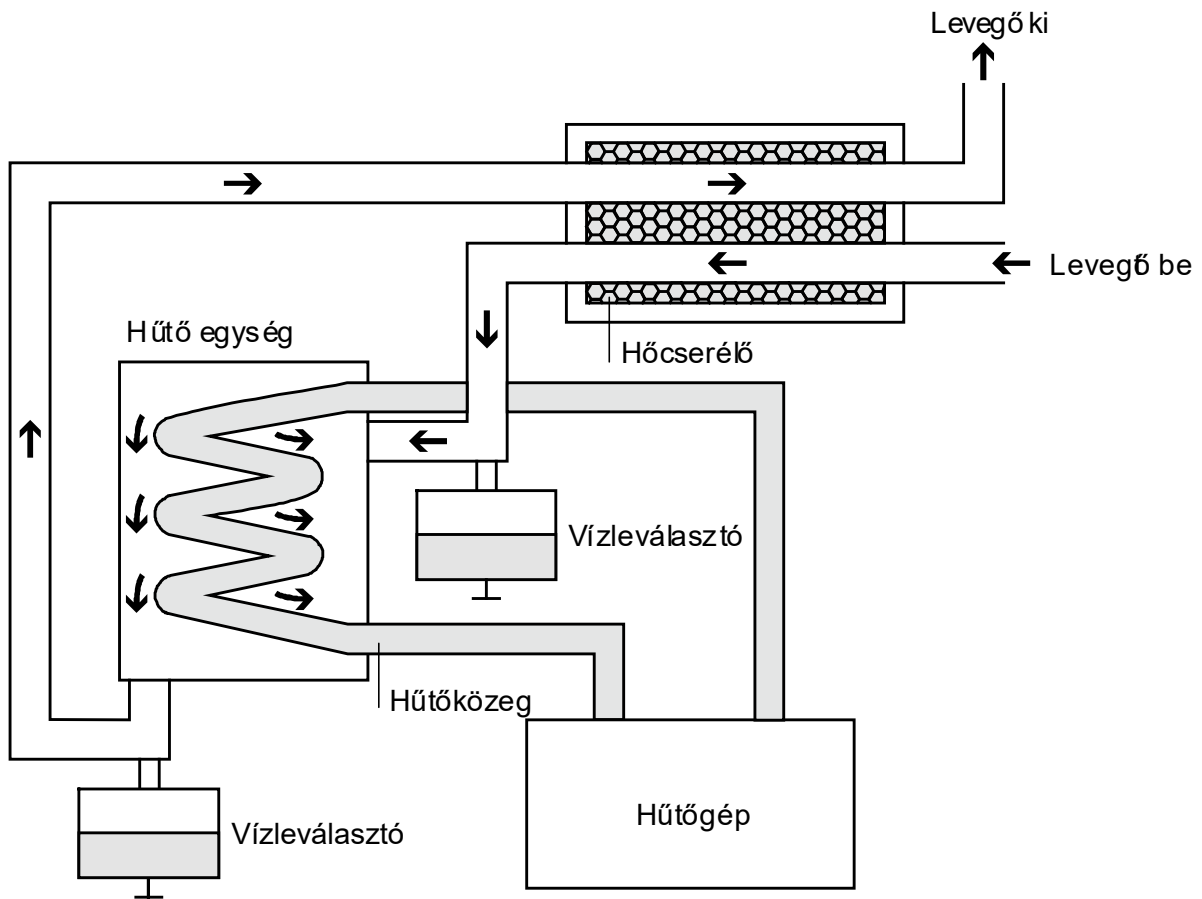
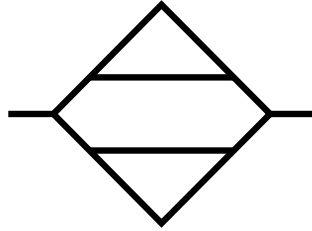
Szinterszűrő

Víz

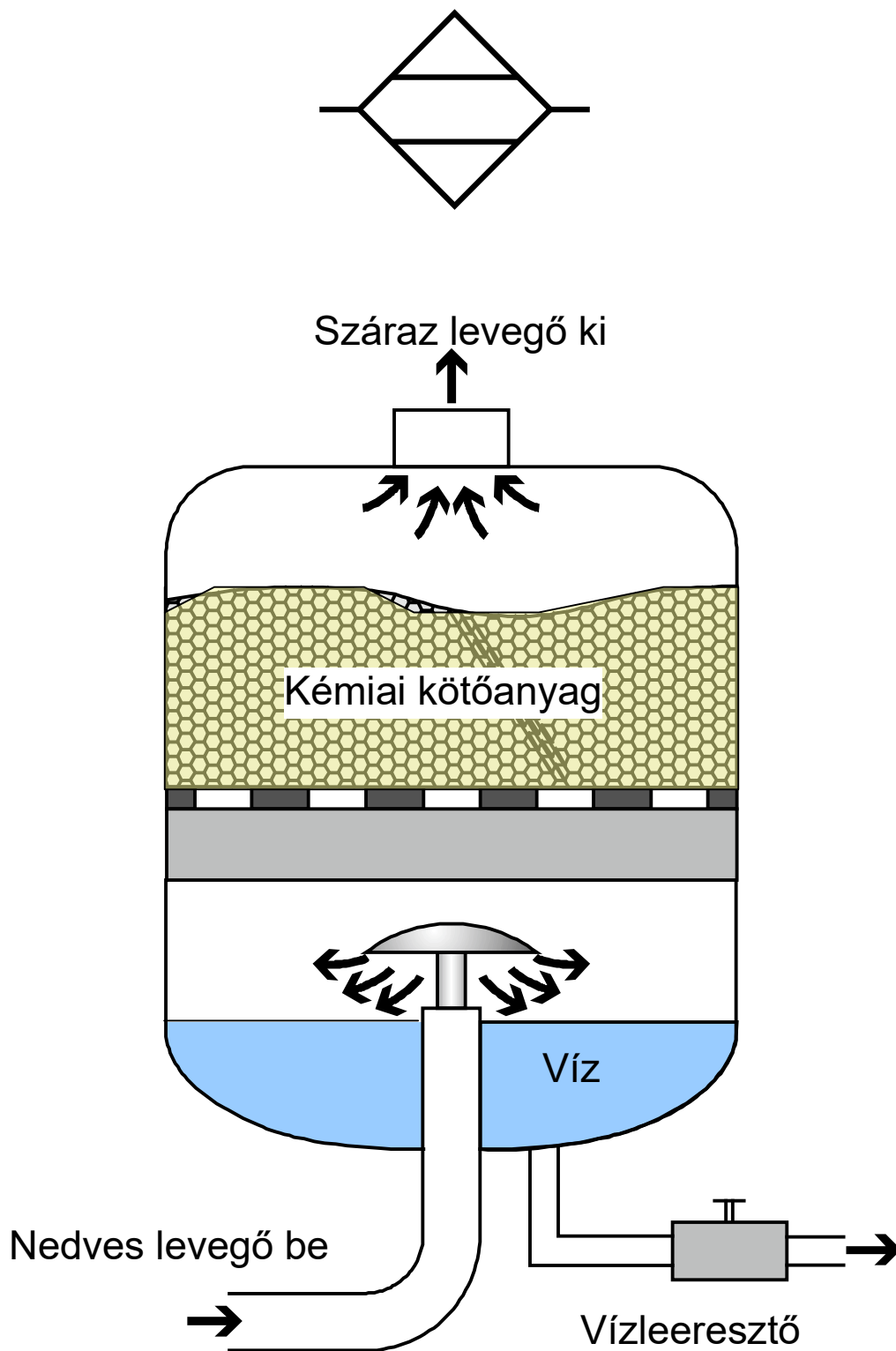
Ház

Leeresztőcsavar

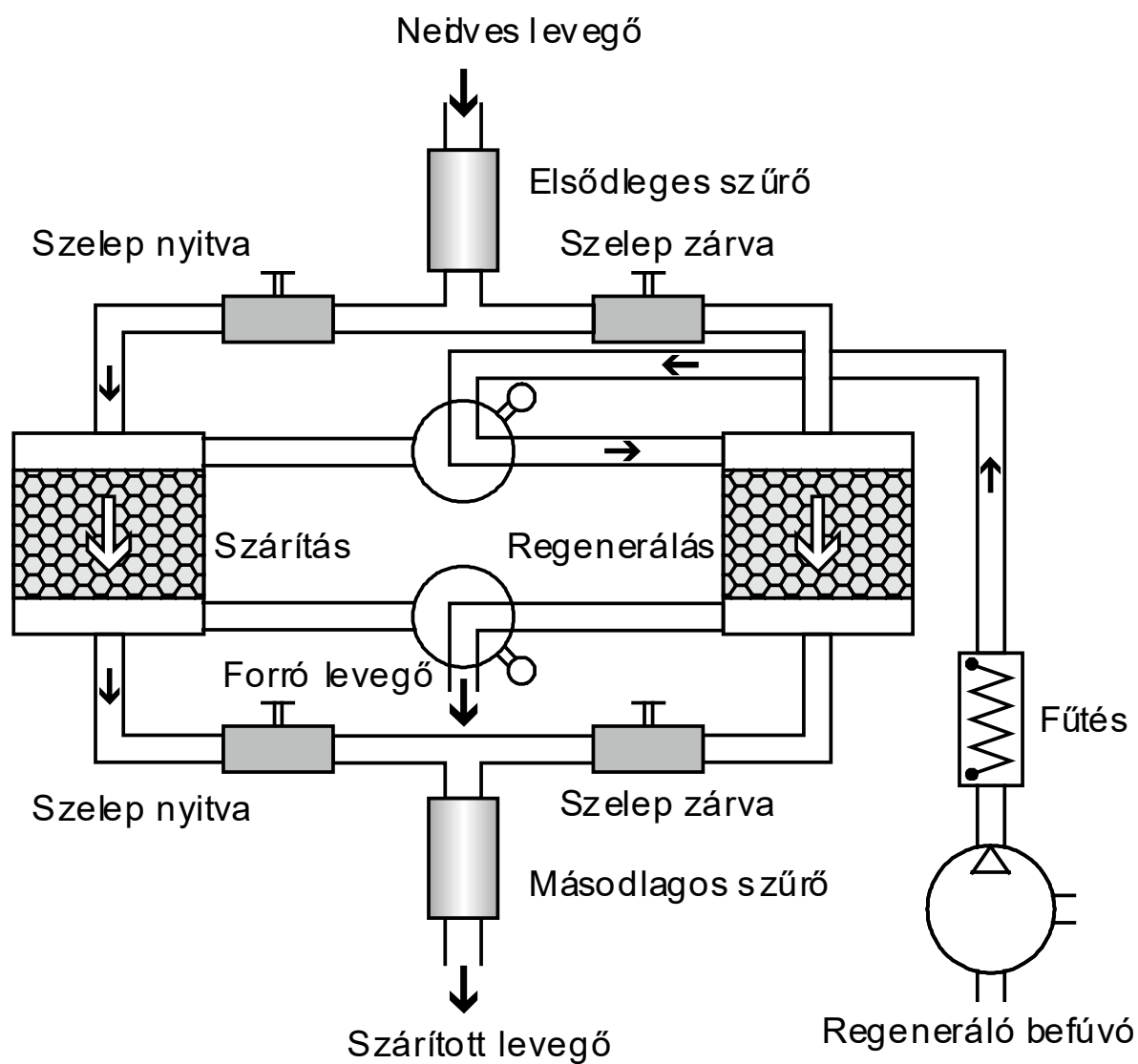
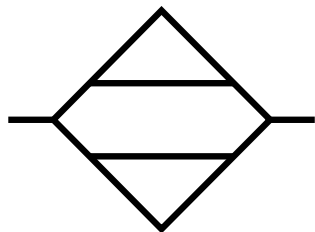
Hűtveszárító



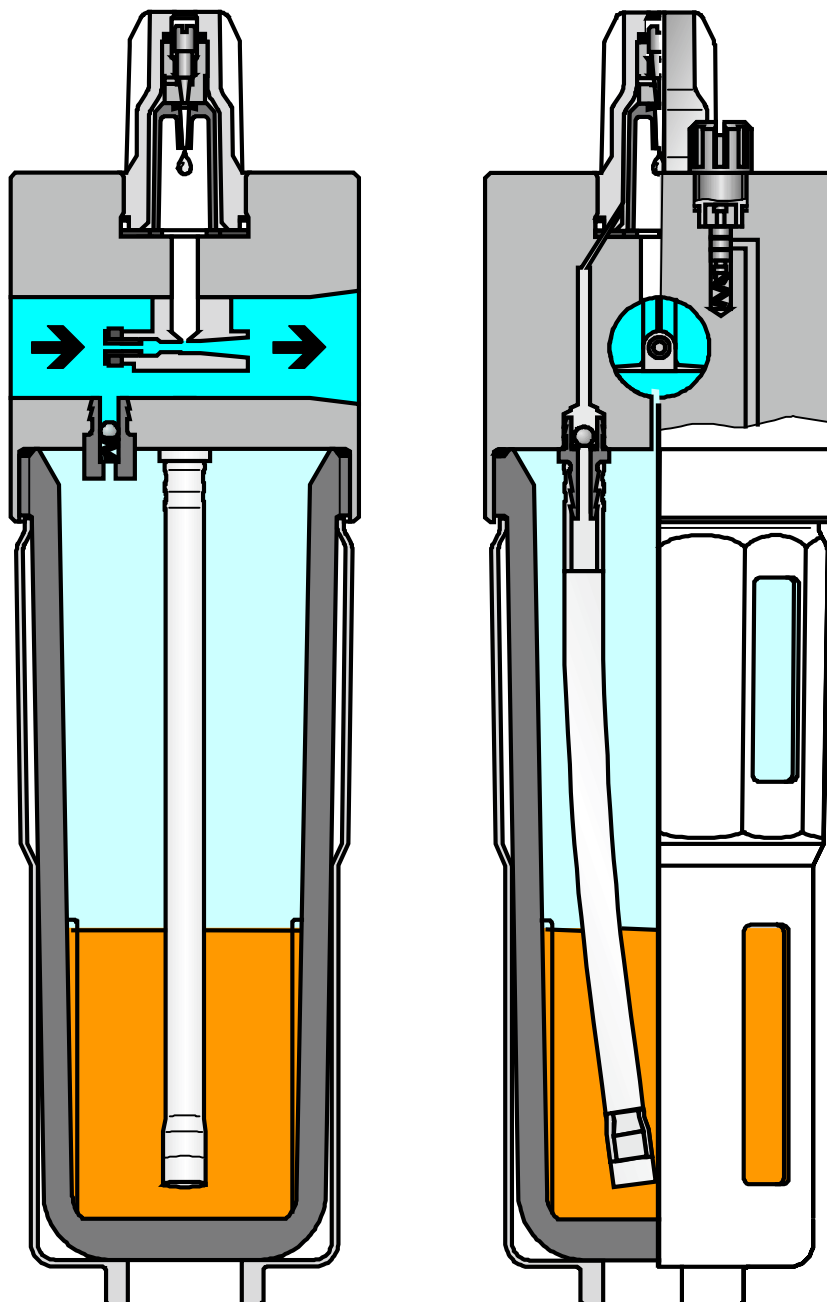
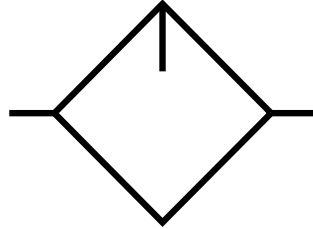
Abszorpció (kémiai) szárítás



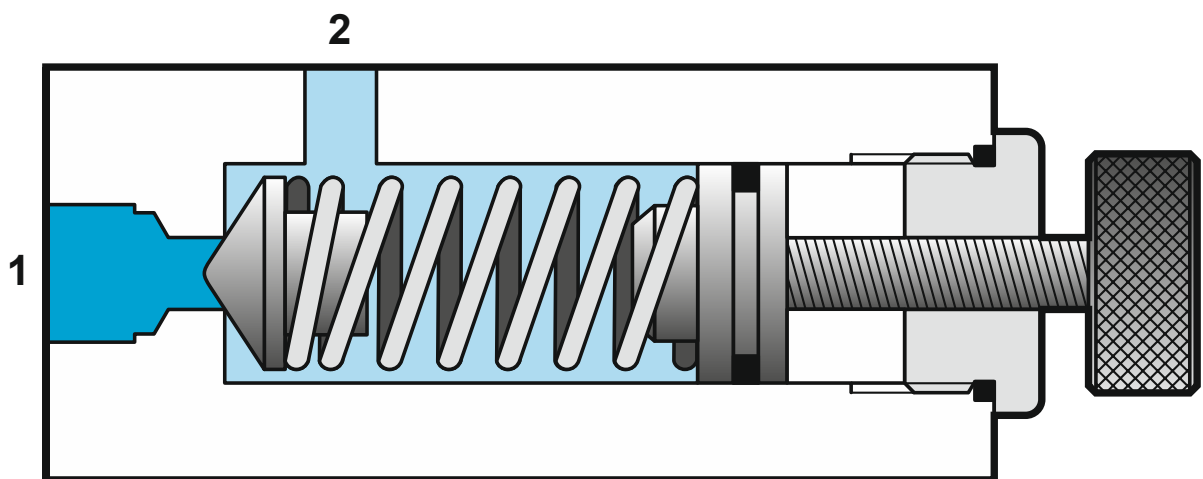
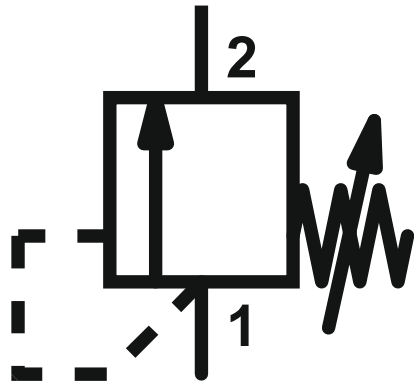
Adszorpció (fizikai, kristályvizes) szárítás



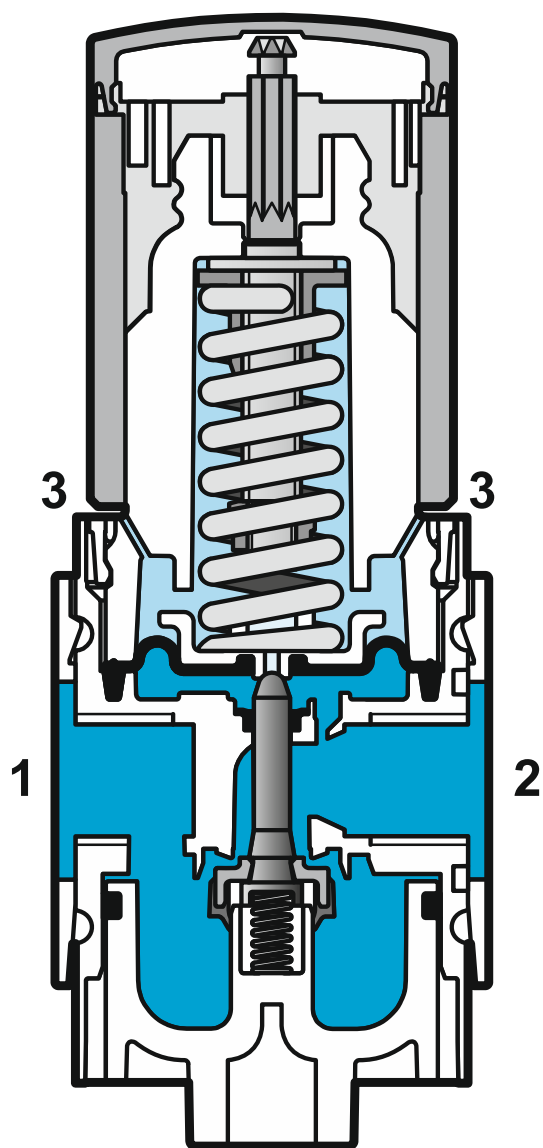
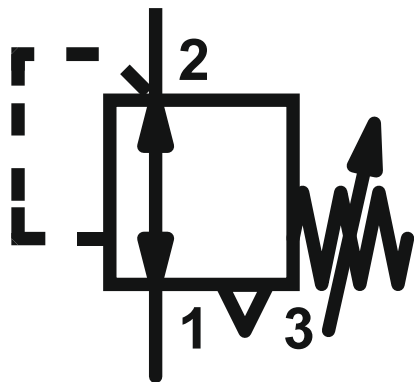
Olajkódkenő



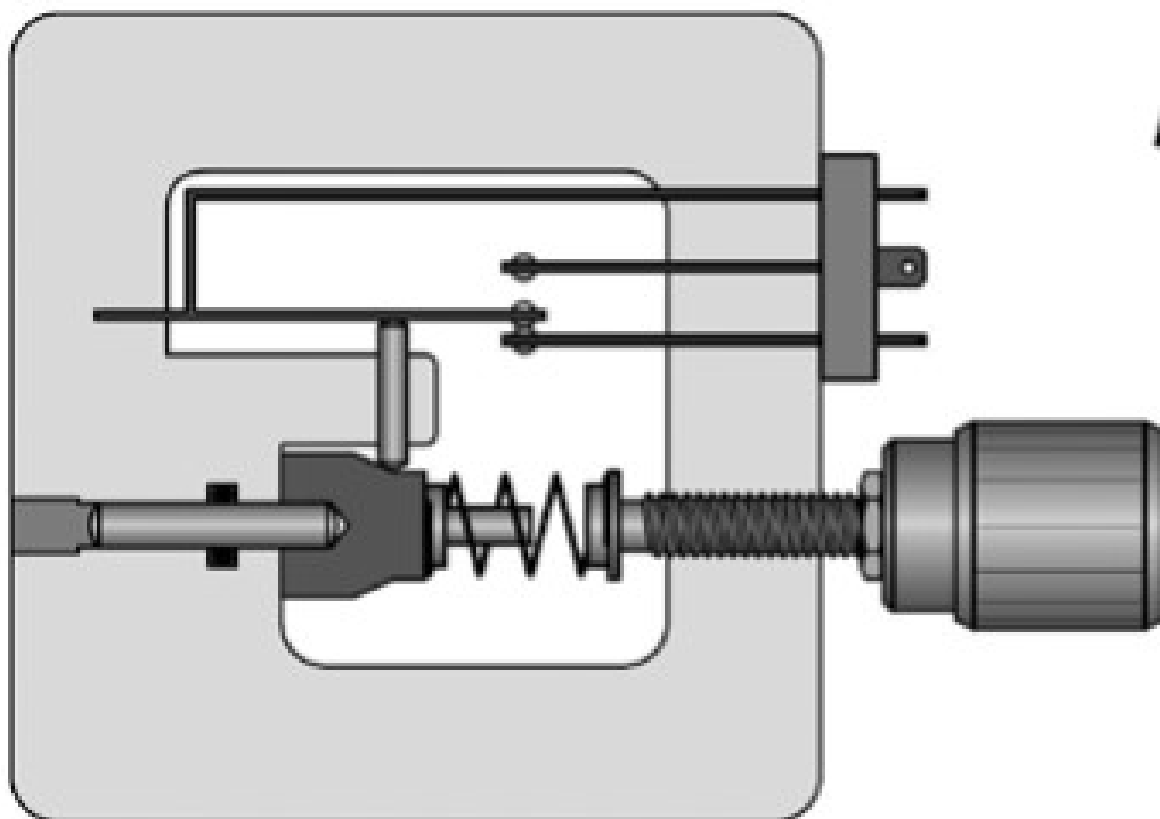
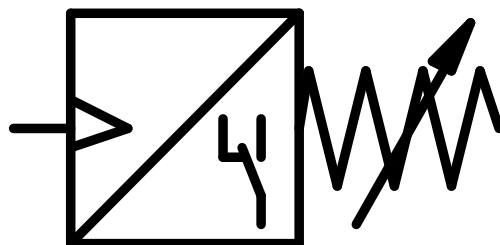
Nyomáshatároló szelep



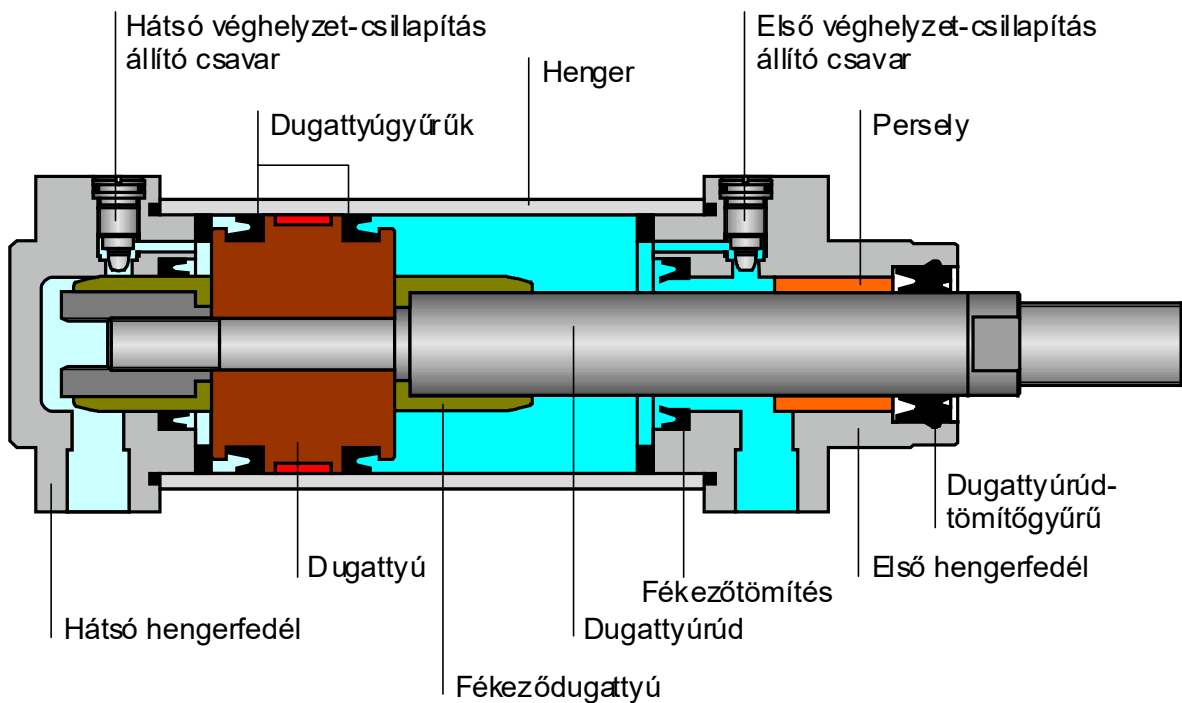
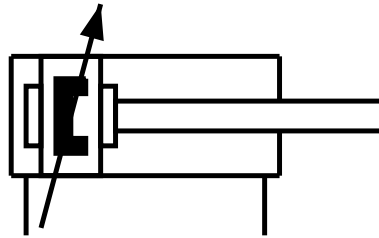
Nyomáscsökkentő szelep



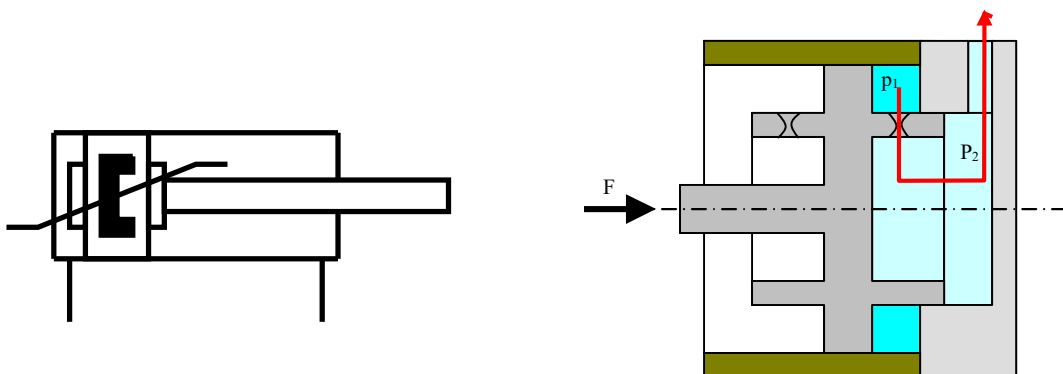
Nyomáskapcsoló



Kettős működésű, állítható véghelyzet- csillapítású mágnesgyűrűs munkahenger belső felépítése

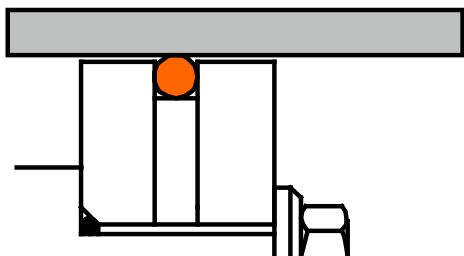


Önszabályzó véghelyzet-csillapítással

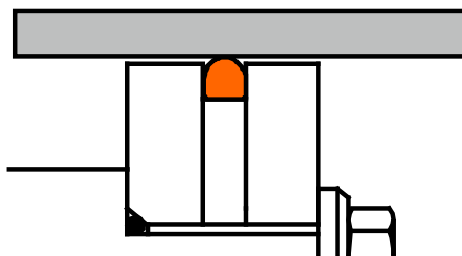


Dinamikus dugattyútömítések

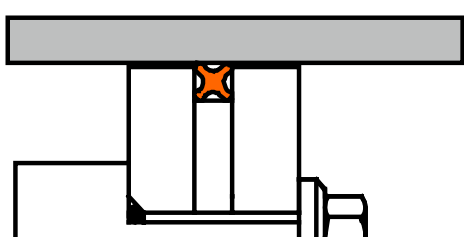
O-gyűrű



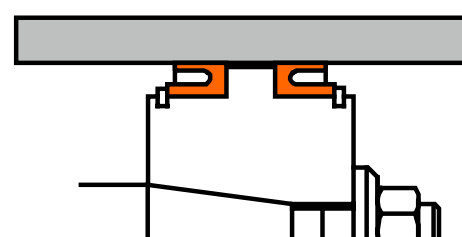
Fél O-gyűrű



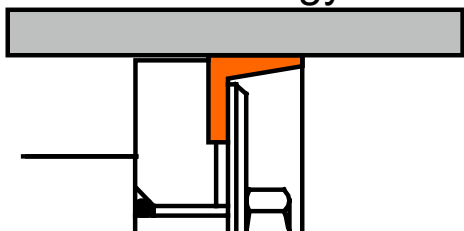
X-gyűrű



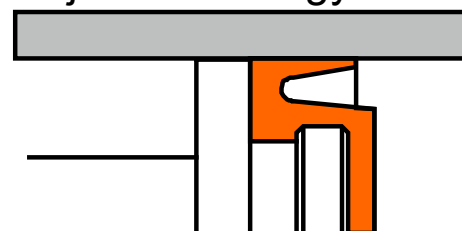
Kétoldalas tömítőgyűrű



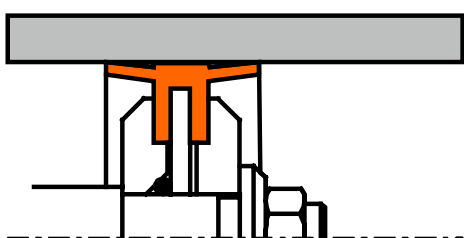
Csésze-tömítőgyűrű



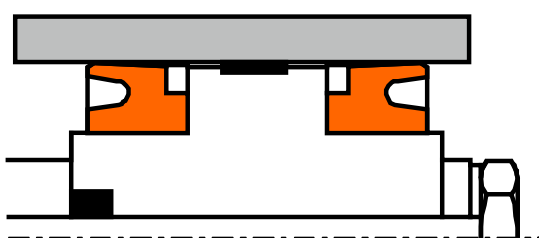
Ajakos tömítőgyűrű



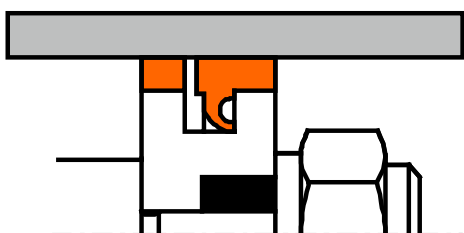
Kettős csésze-tömítőgyűrű



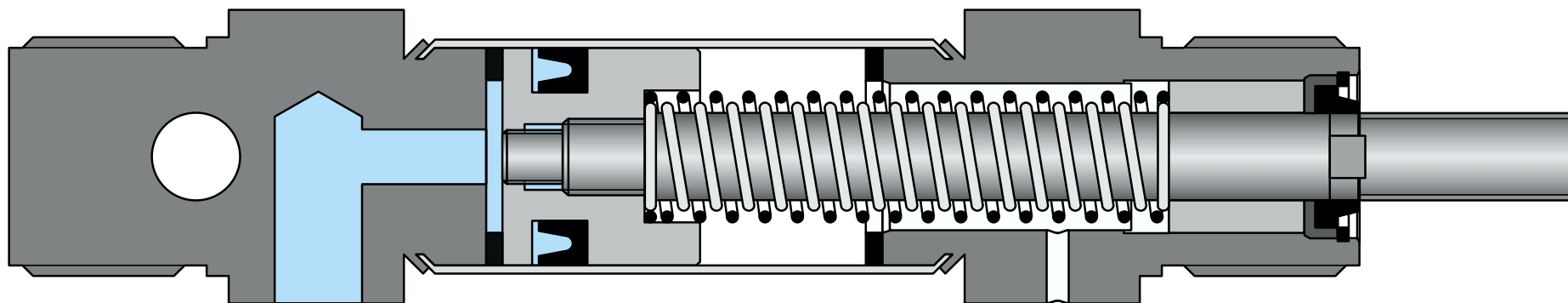
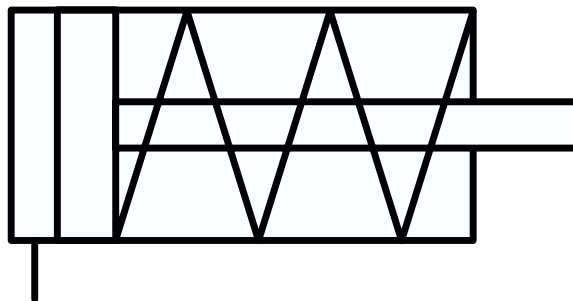
Két darab tömítőgyűrű



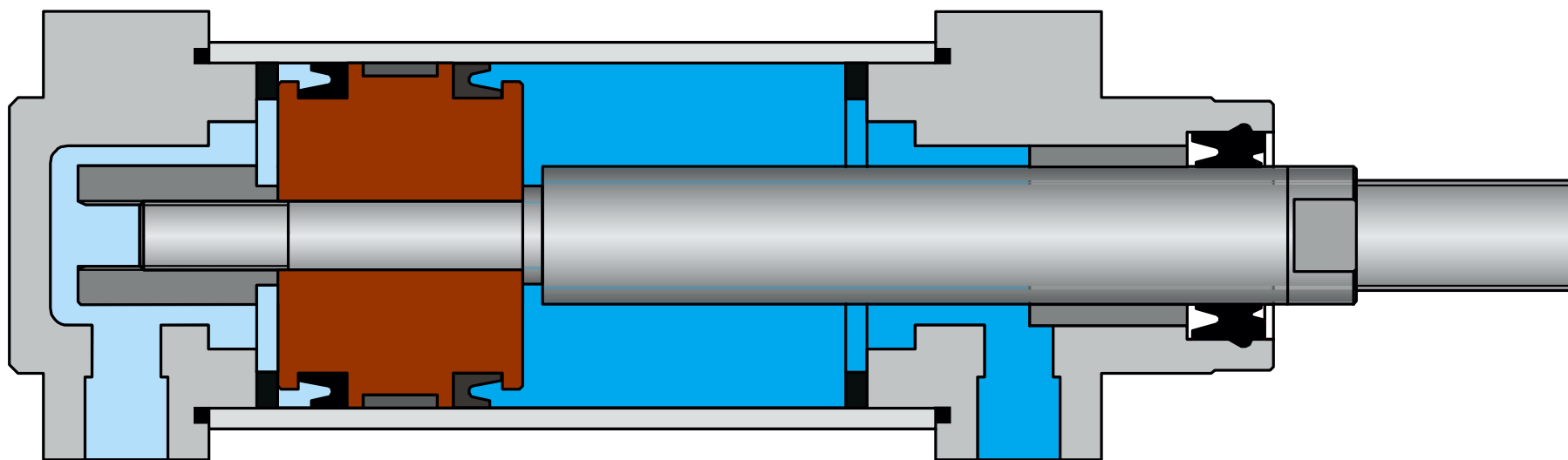
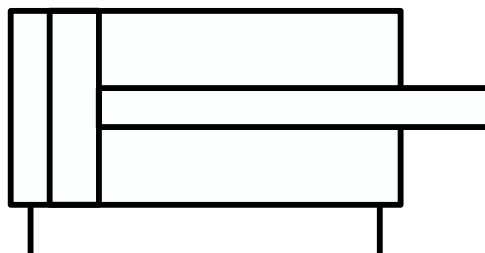
L-gyűrű



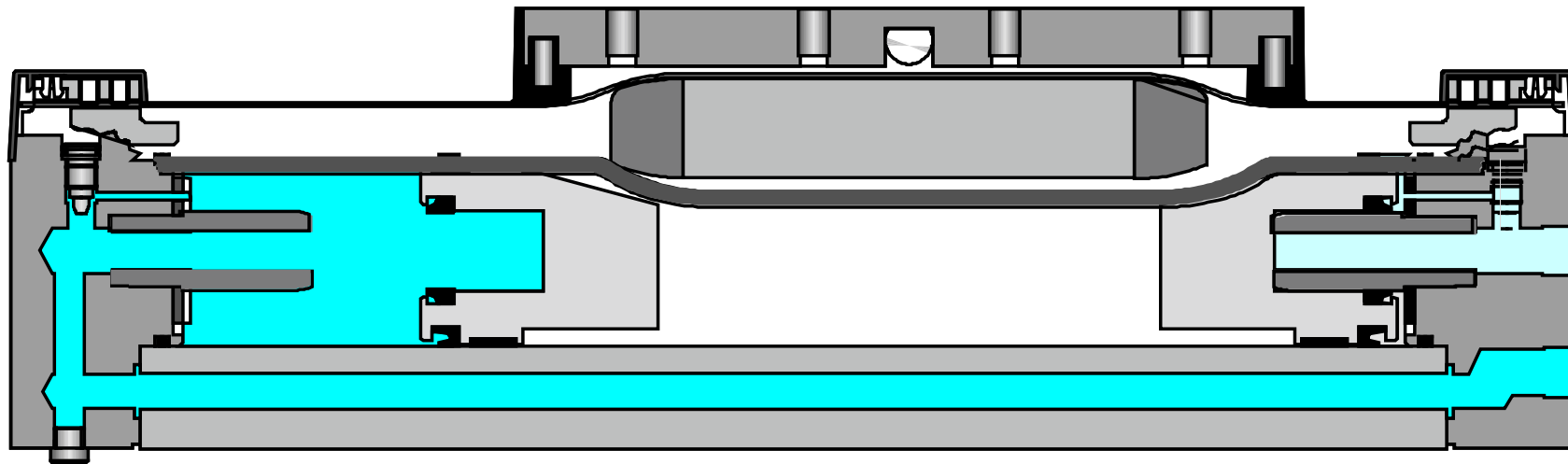
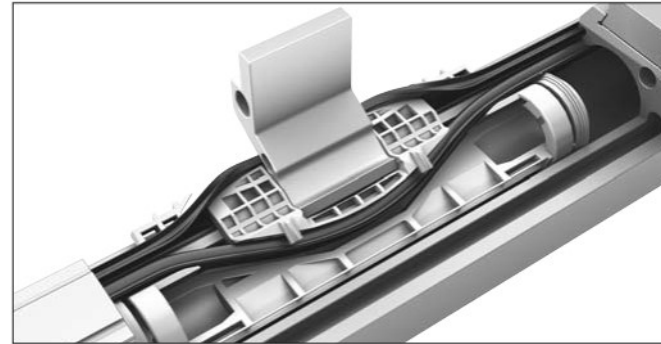
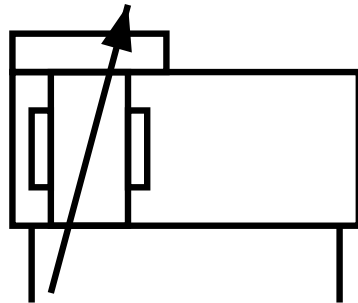
Egyszeres működésű munkahenger



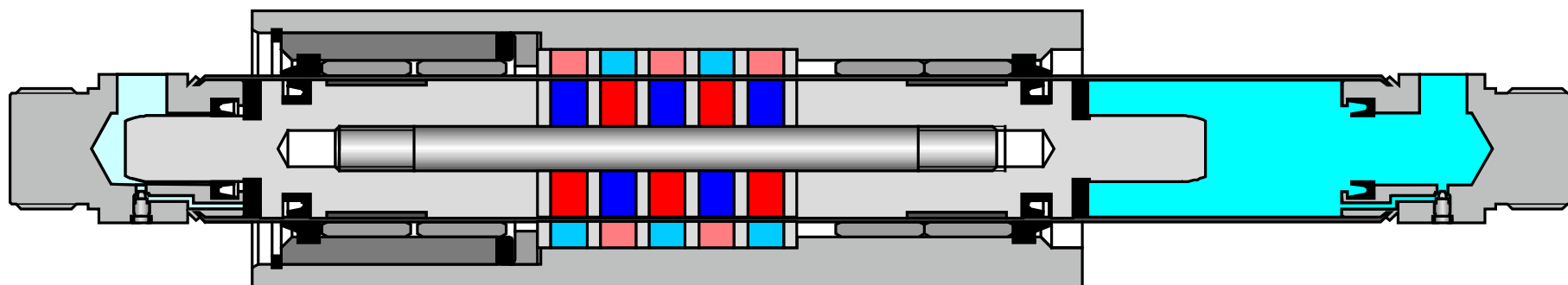
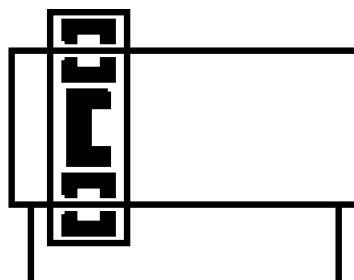
Kettős működésű munkahenger



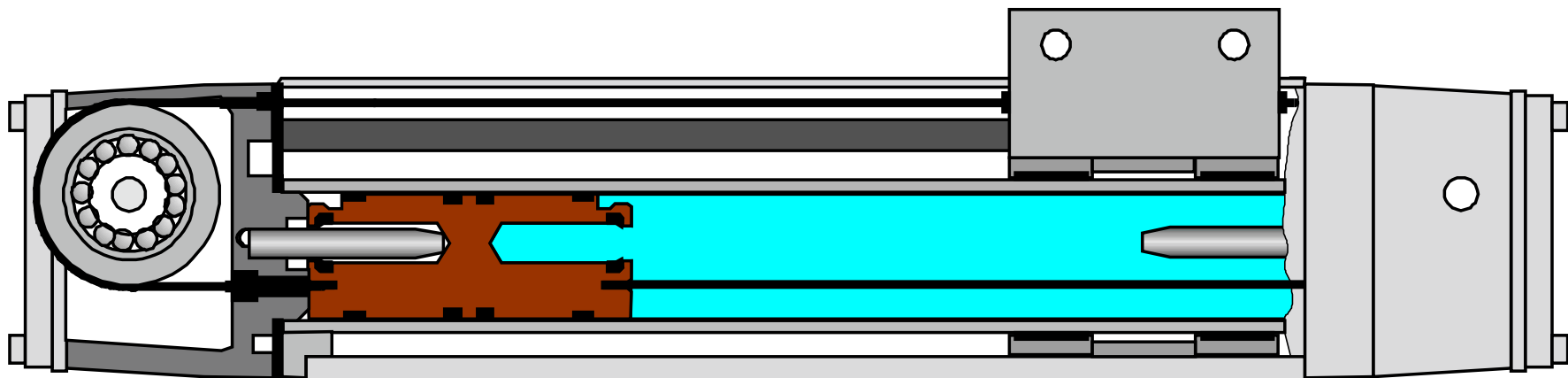
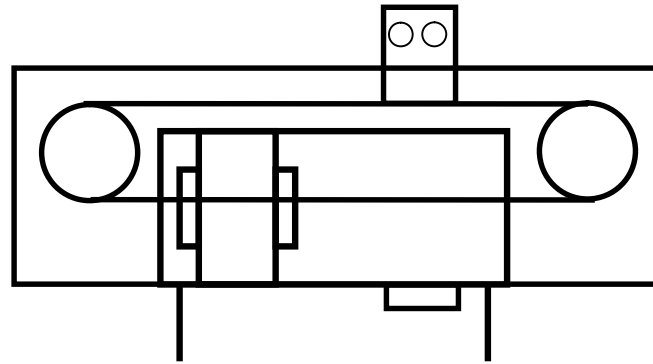
Lineáris hajtómű (dugattyúrúd nélküli henger), tömítőgumis, bemetszett hengeres kivitel, állítható véghelyzet-csillapítással



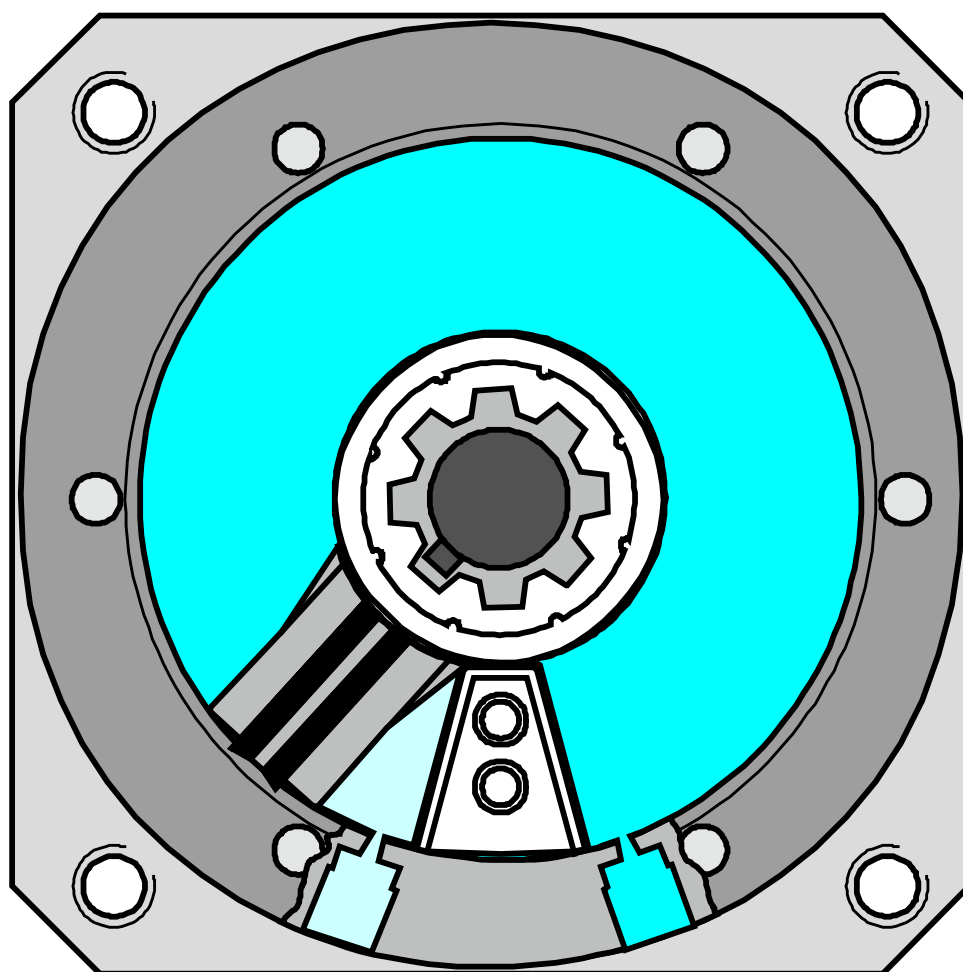
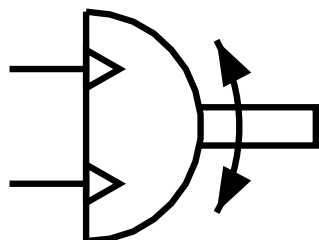
Lineáris hajtómű (dugattyúrúd nélküli henger), mágneses erőátvitellel



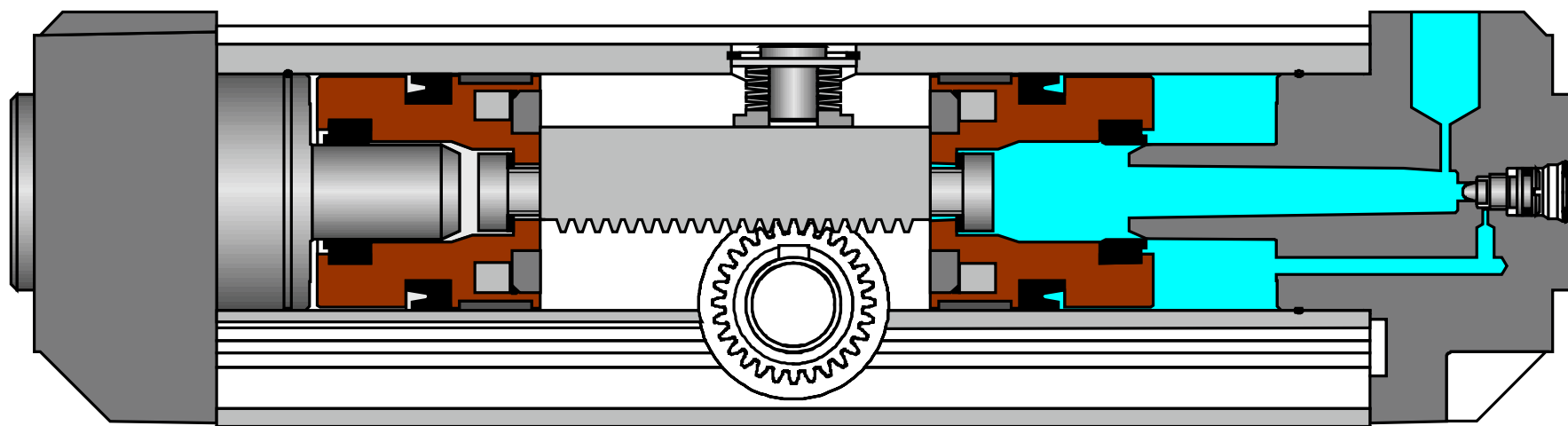
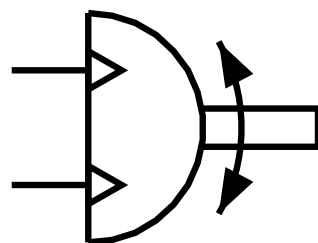
Lineáris hajtómű (dugattyúrúd nélküli henger), kötélhenger



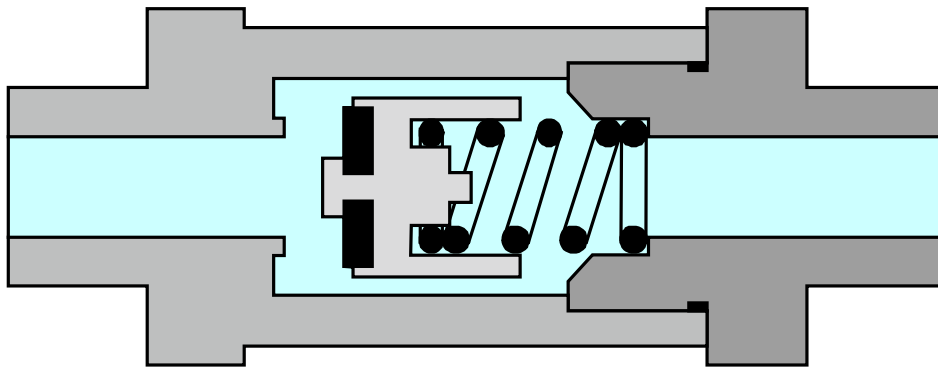
Kettős működésű fordítóhajtómű



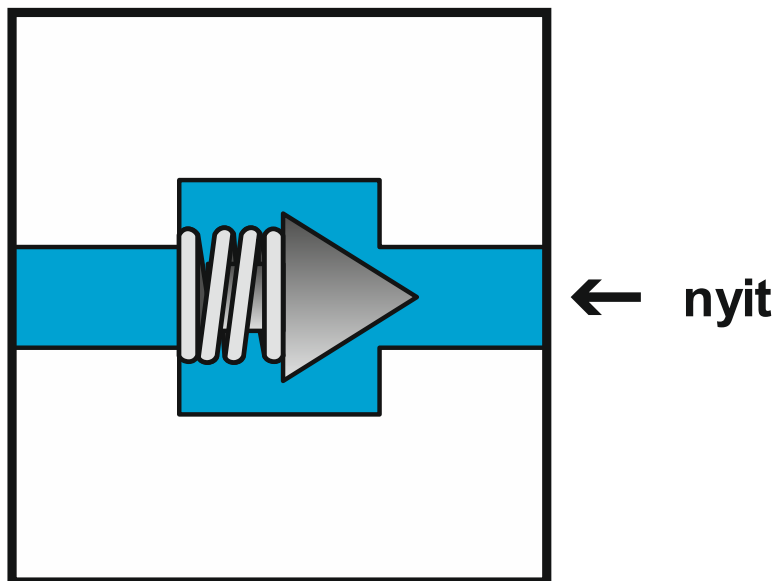
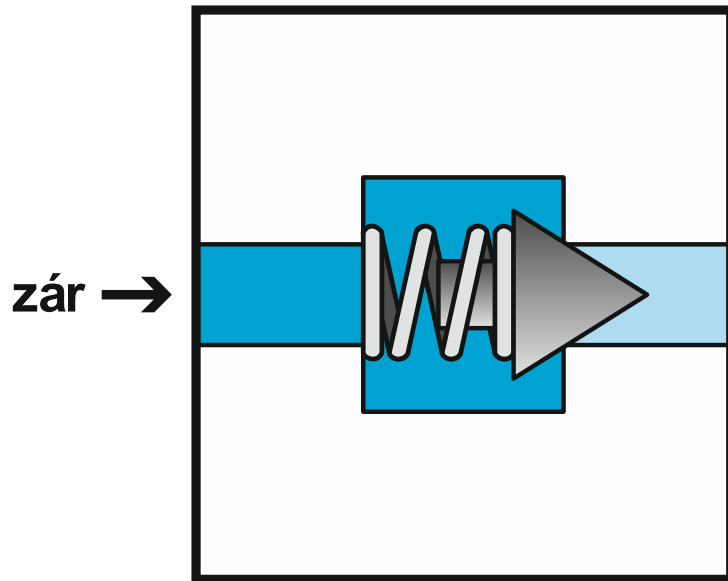
Forgatóhenger (fogasléces)



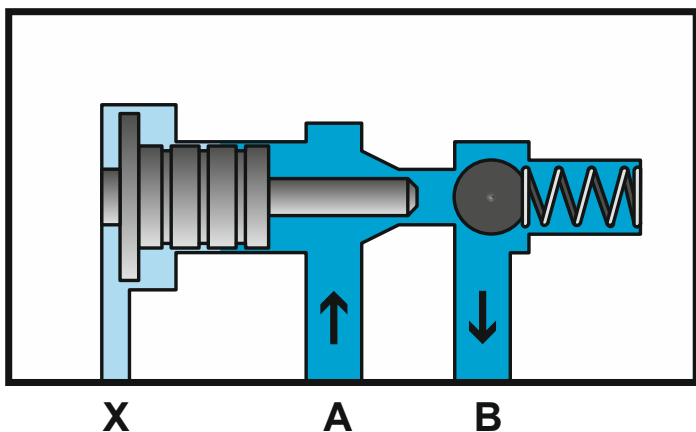
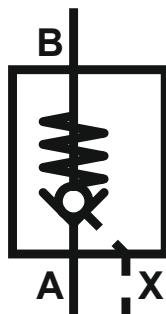
Visszacsapó szelep (rugós)



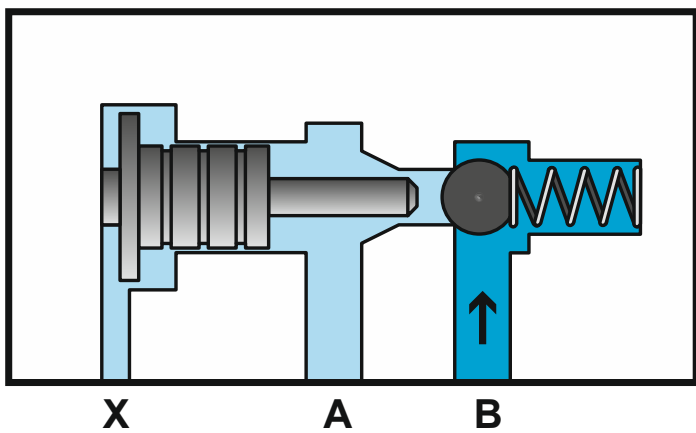
Visszacsapó szelep



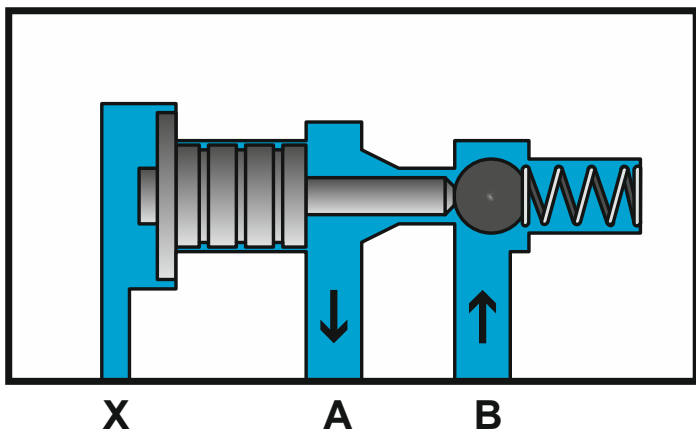
Vezérelt visszacsapó szelep



A-ból B-be nyit

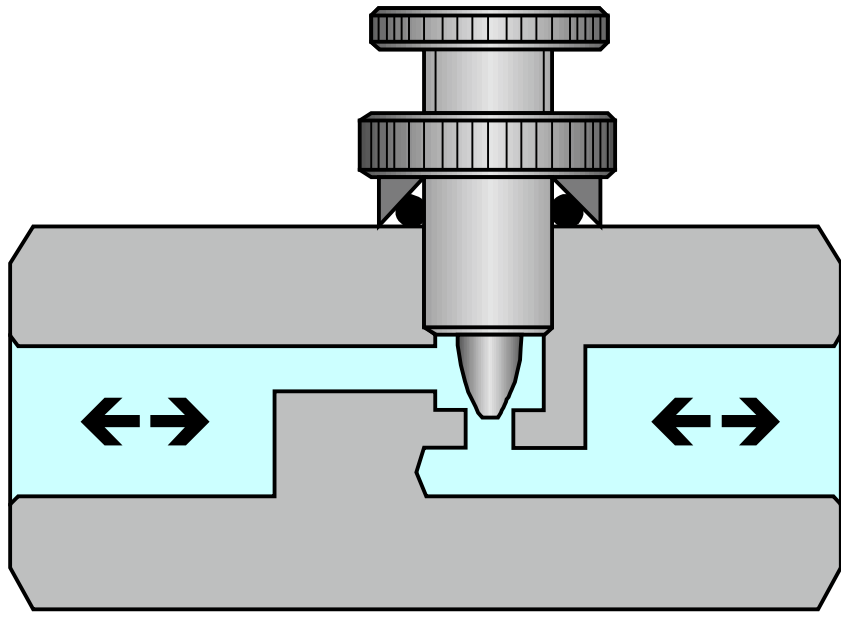
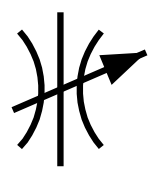


B-ből A-ba zár

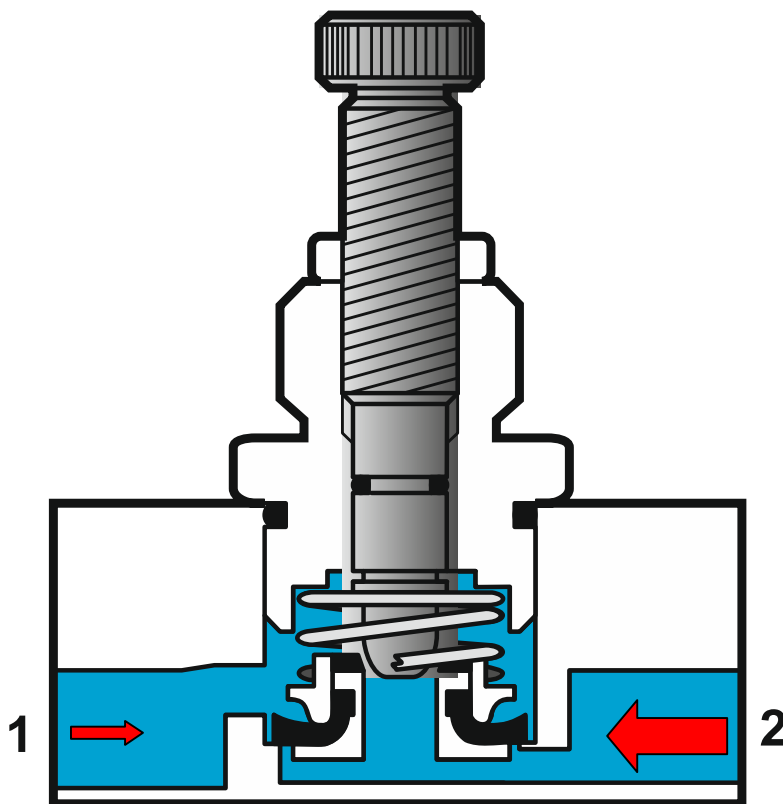
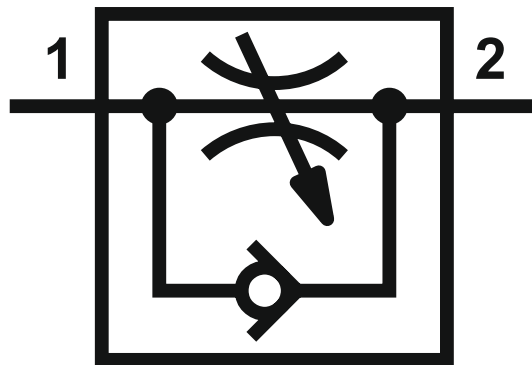


X nyitja B-ből A-ba

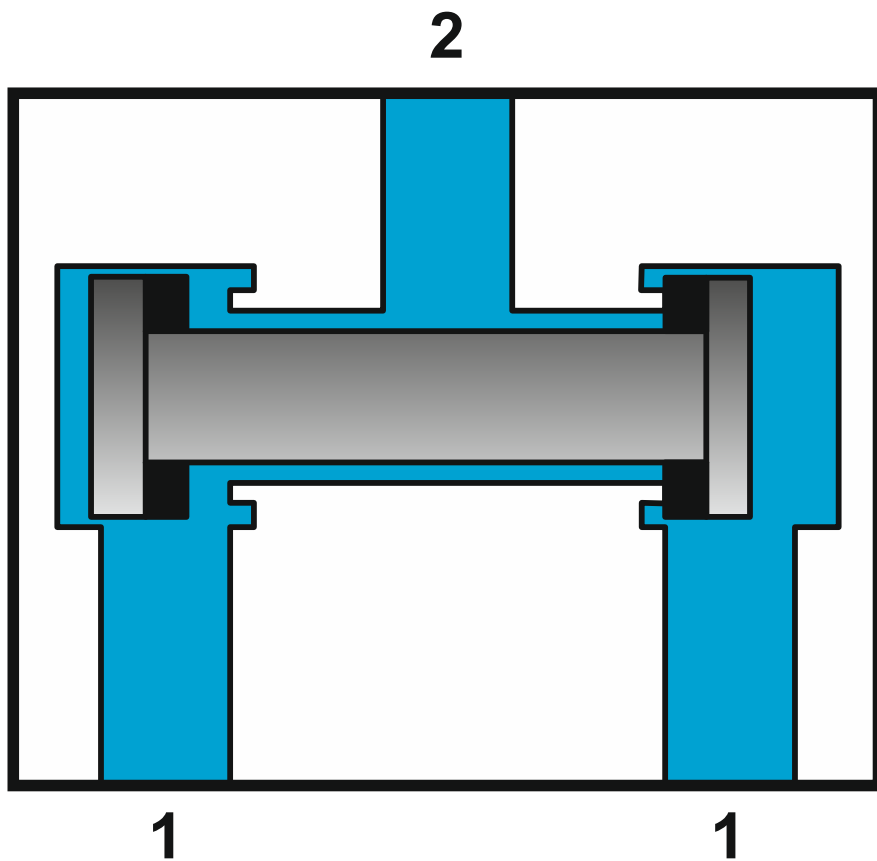
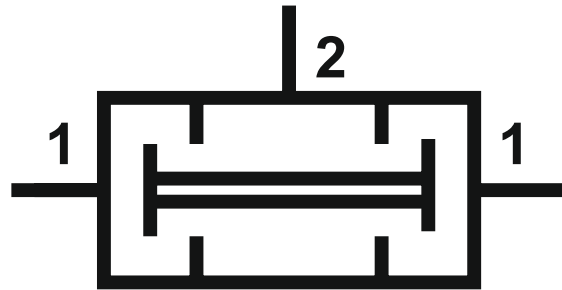
Állítható fojtószelep



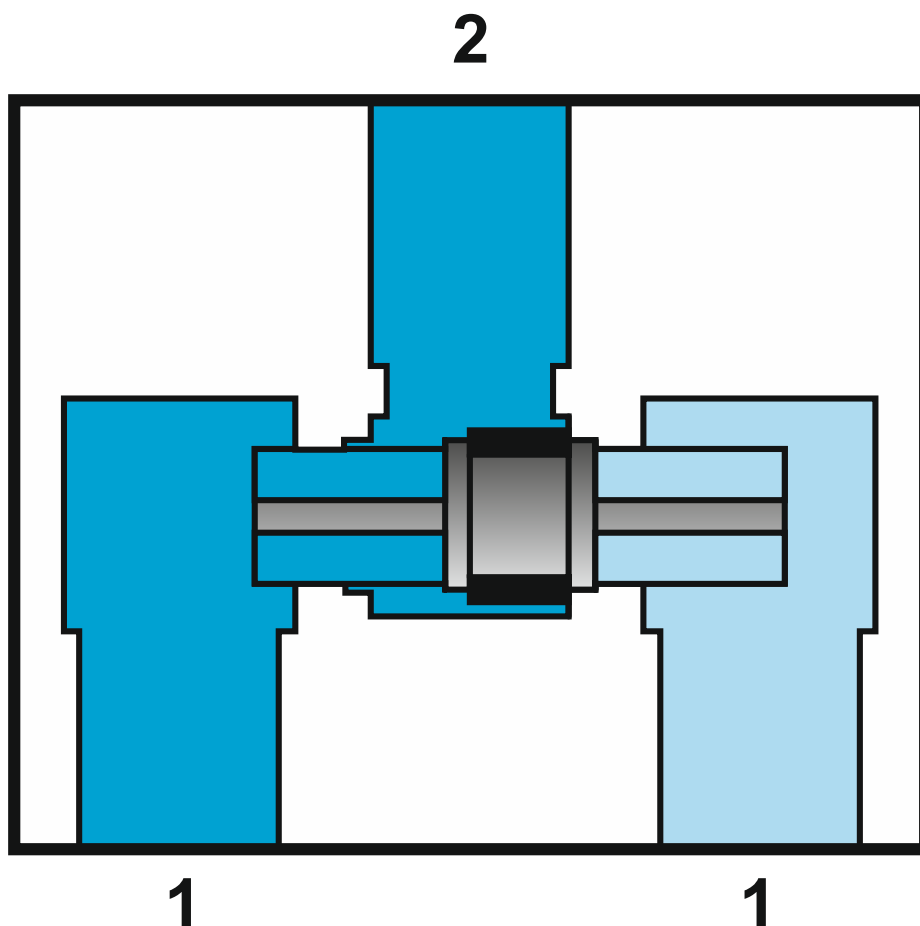
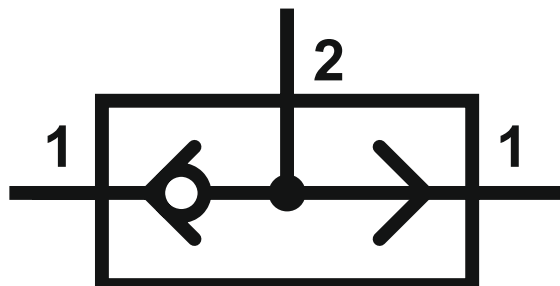
Fojtó-visszacsapó szelep



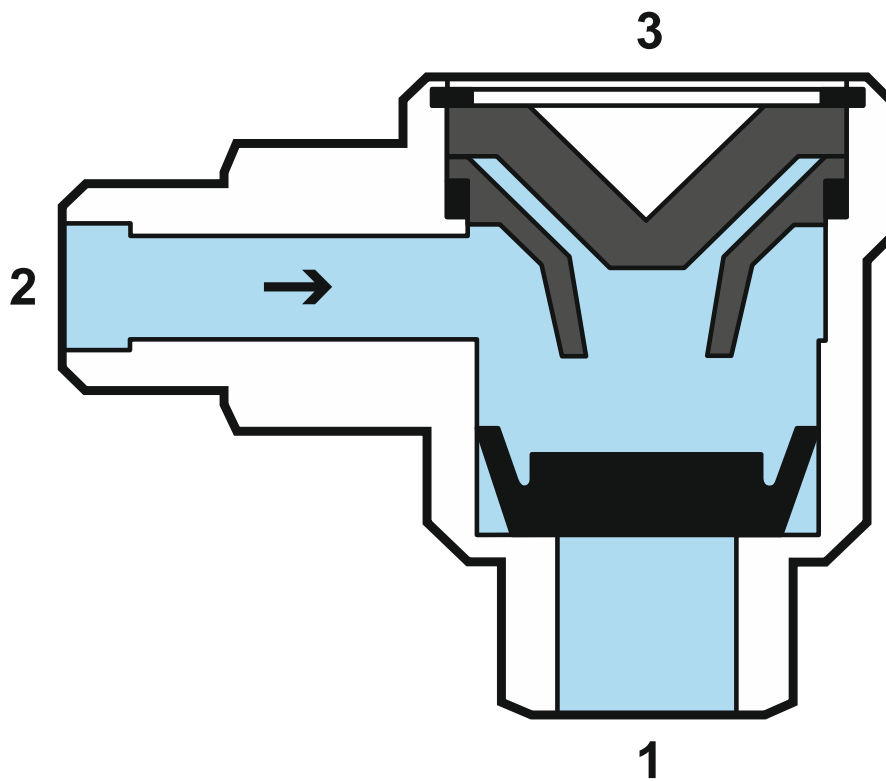
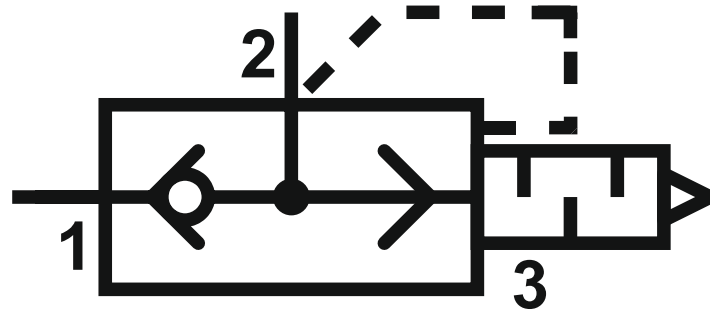
„ÉS” szelep



„VAGY” szelep

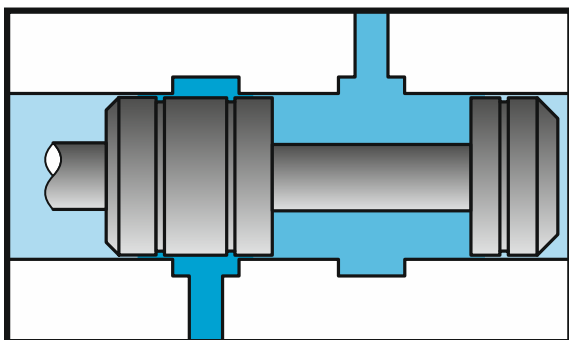


Gyorsleürítő szelep

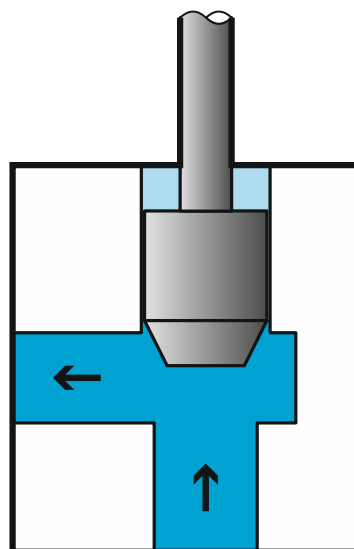
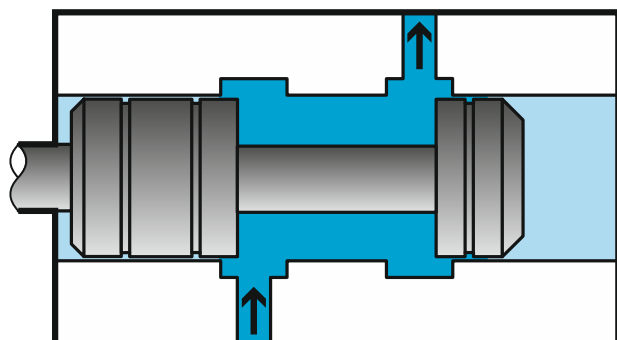
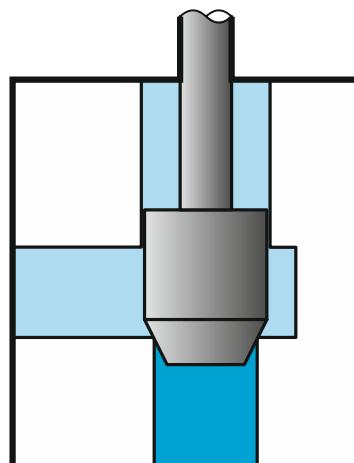


Szelepkialakítási elvek

Tolattyús

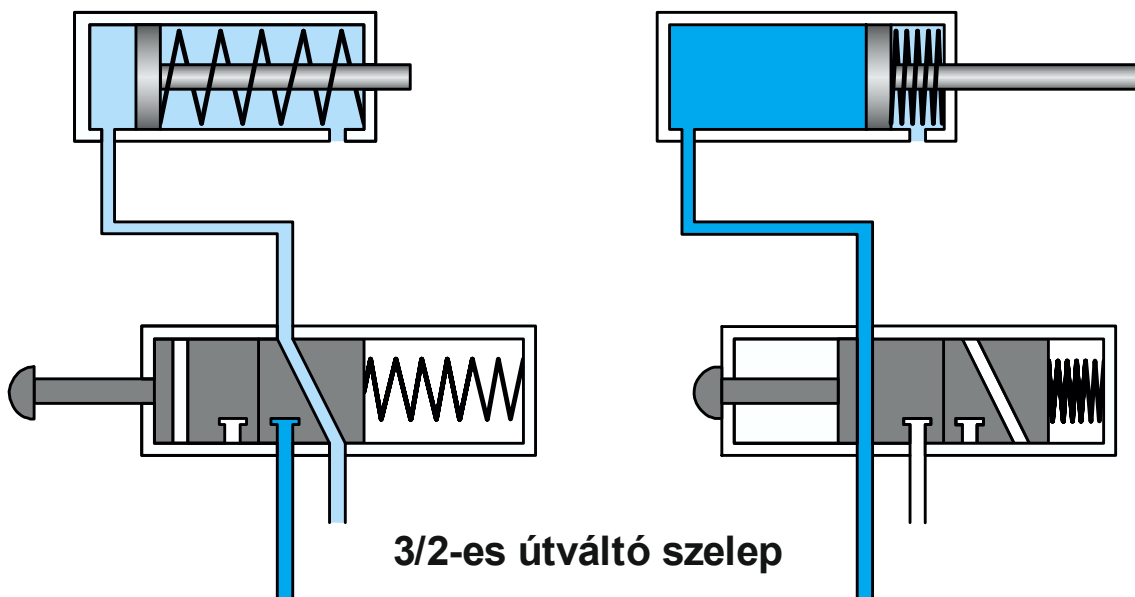


Ülékes

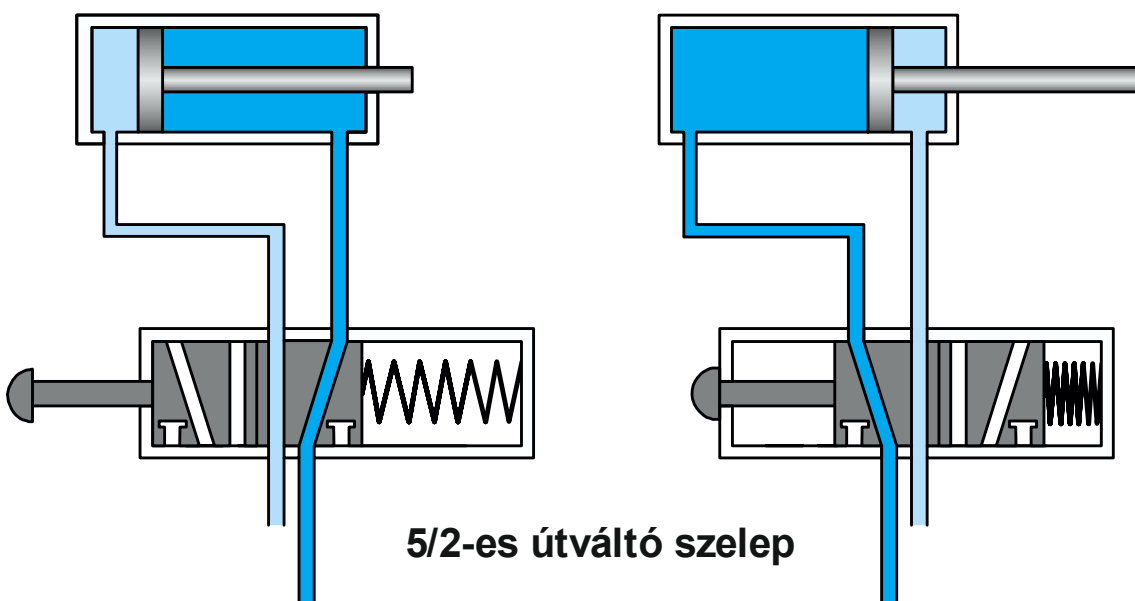


Szelep-munkahenger párosítások

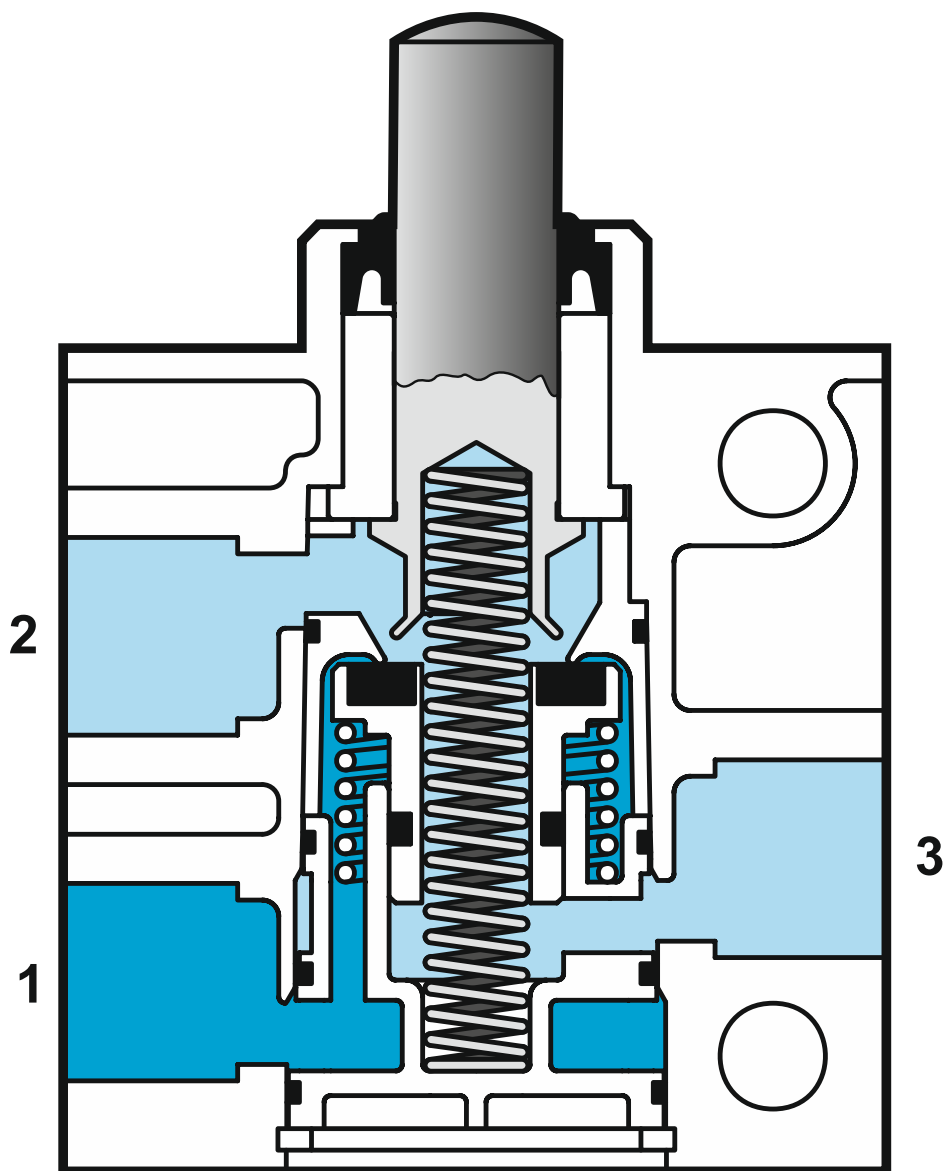
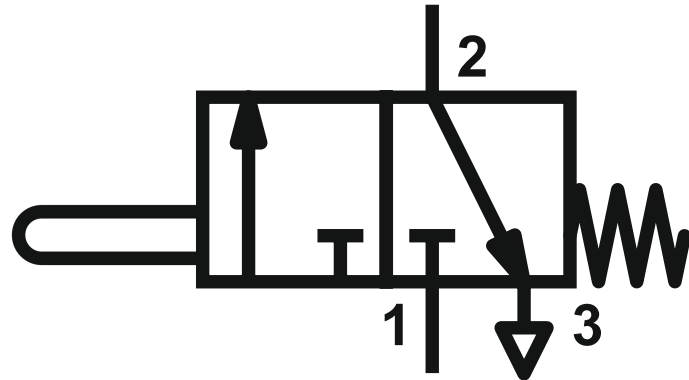
Egyszeres működésű munkahenger



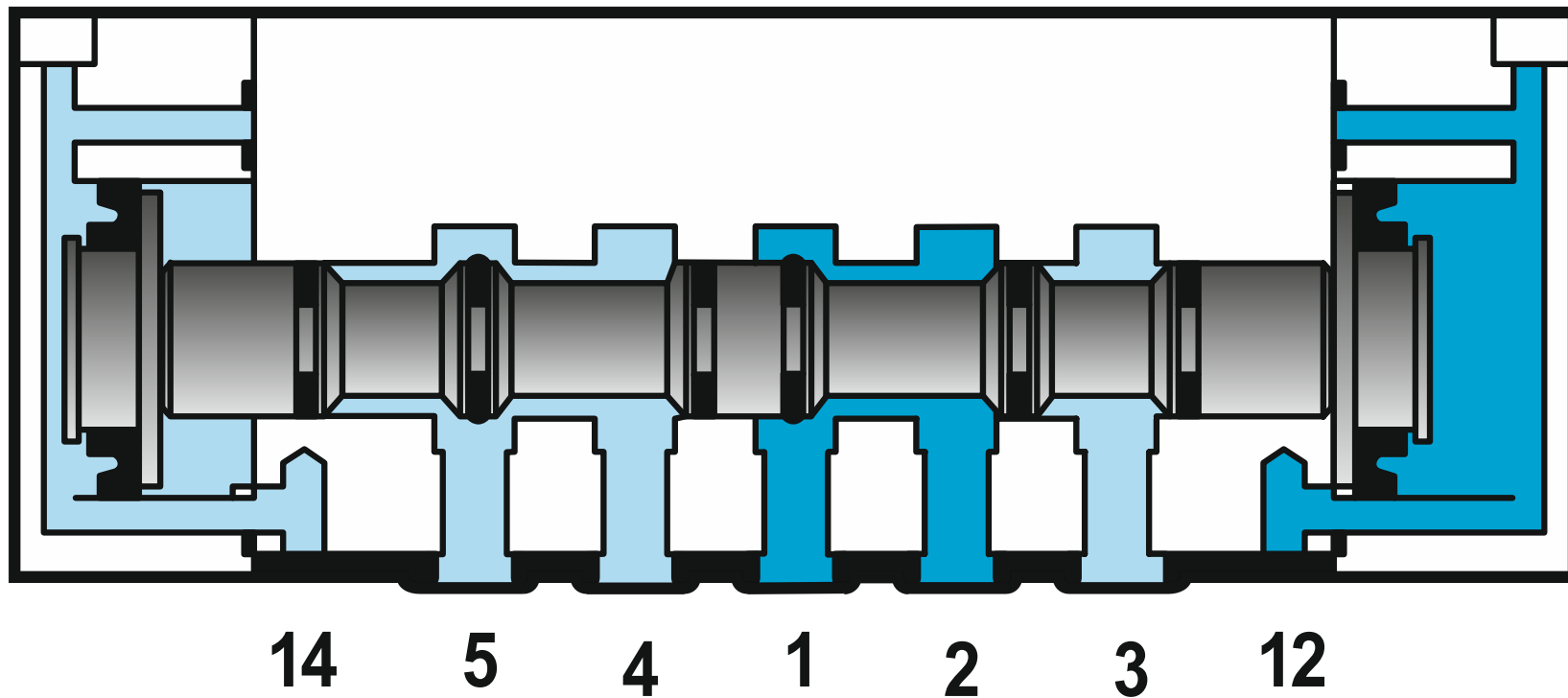
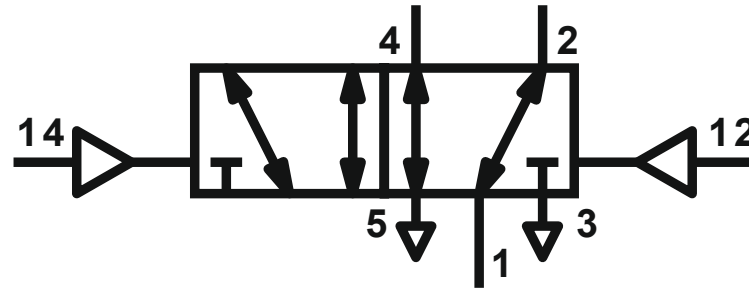
Kettős működésű munkahenger



3/2-es monostabil manuális működtetésű útváltó szelep (ülékes)

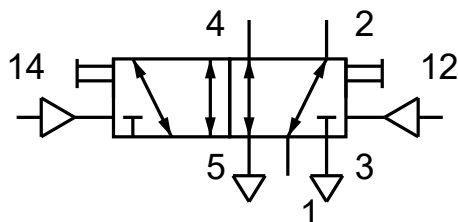


5/2-es bistabil pneumatikus működtetésű útváltó szelep (tolattyús)

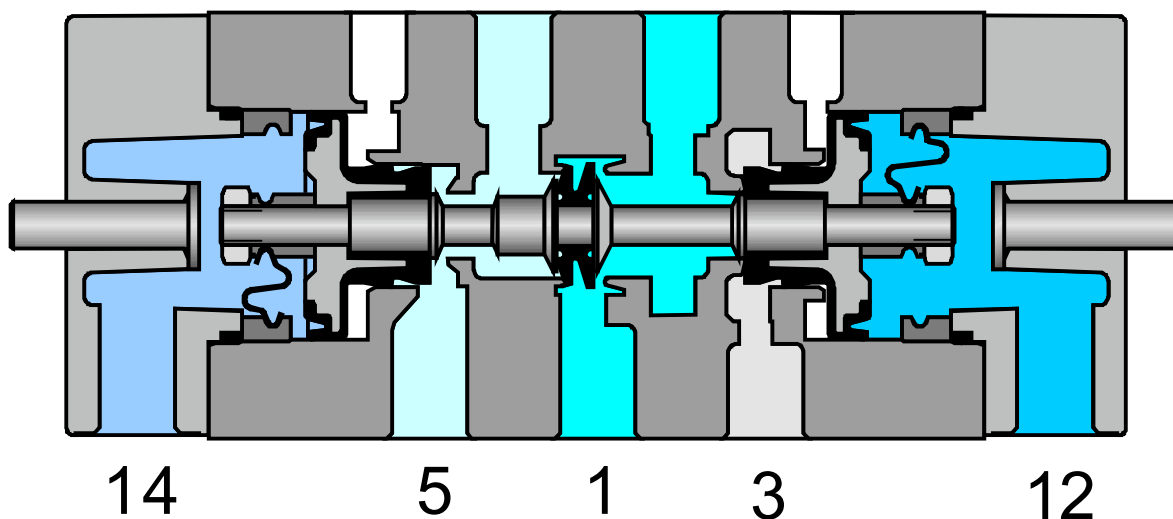


5/2-es bistabil pneumatikus vezérlésű útváltó szelep

Ülékes, kézi segédműködtetéses

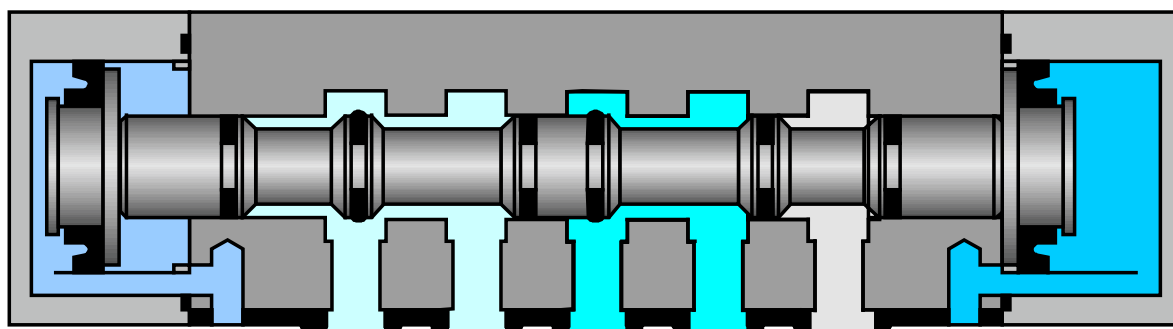
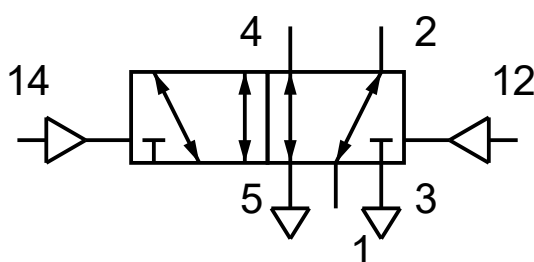


4 2



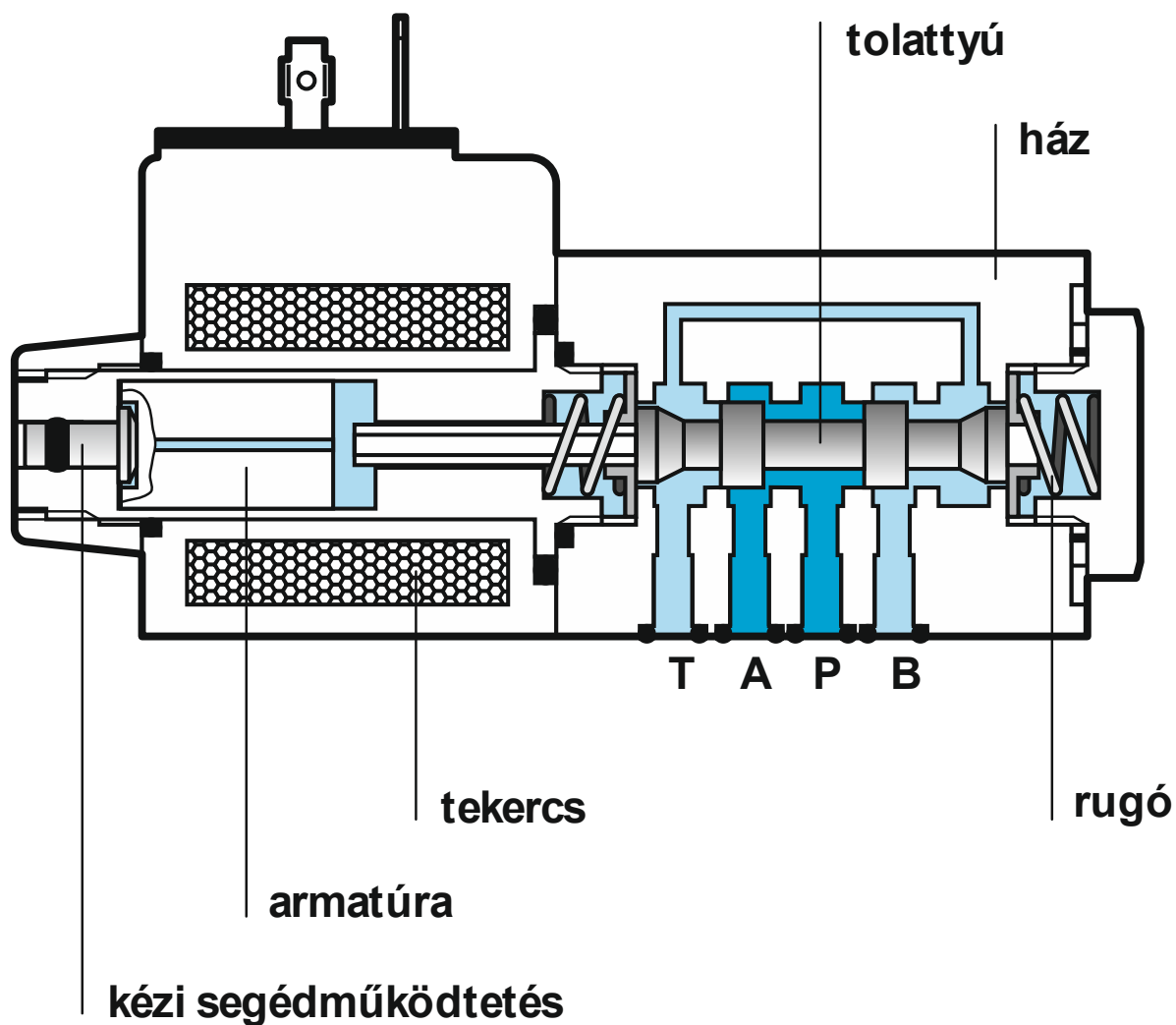
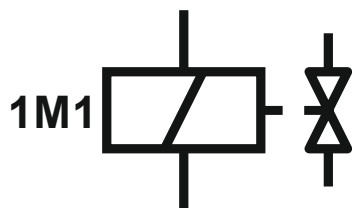
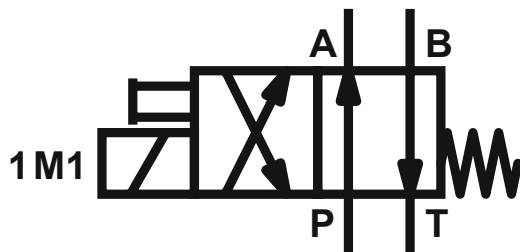
14 5 1 3 12

Tolattyús

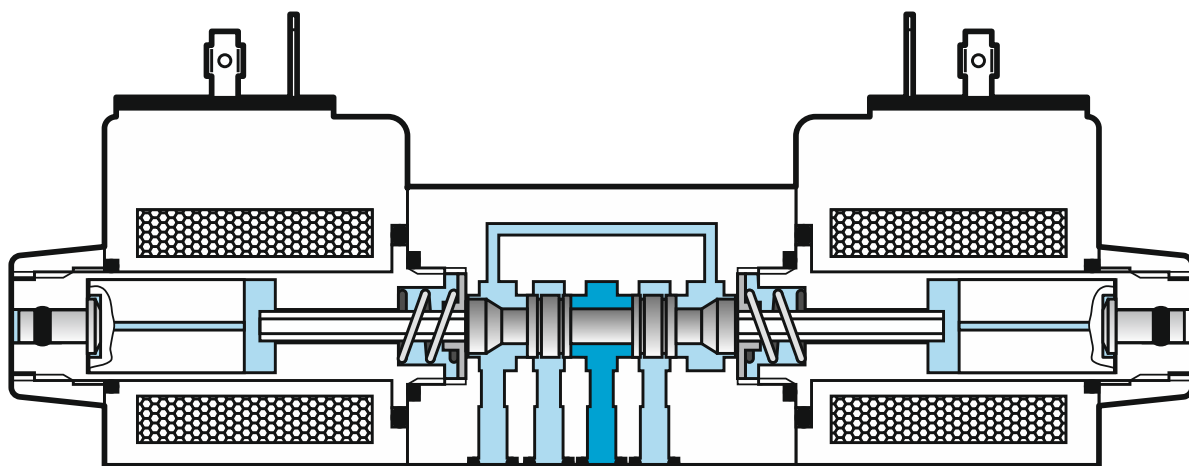
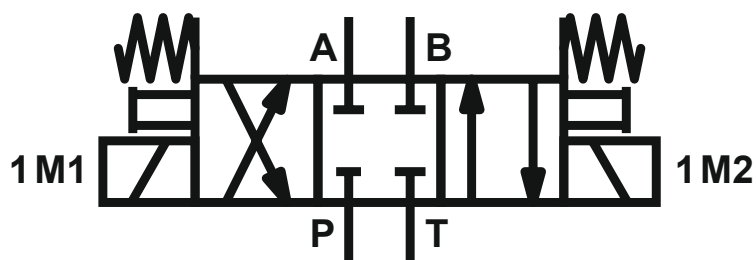


14 5 4 1 2 3 12

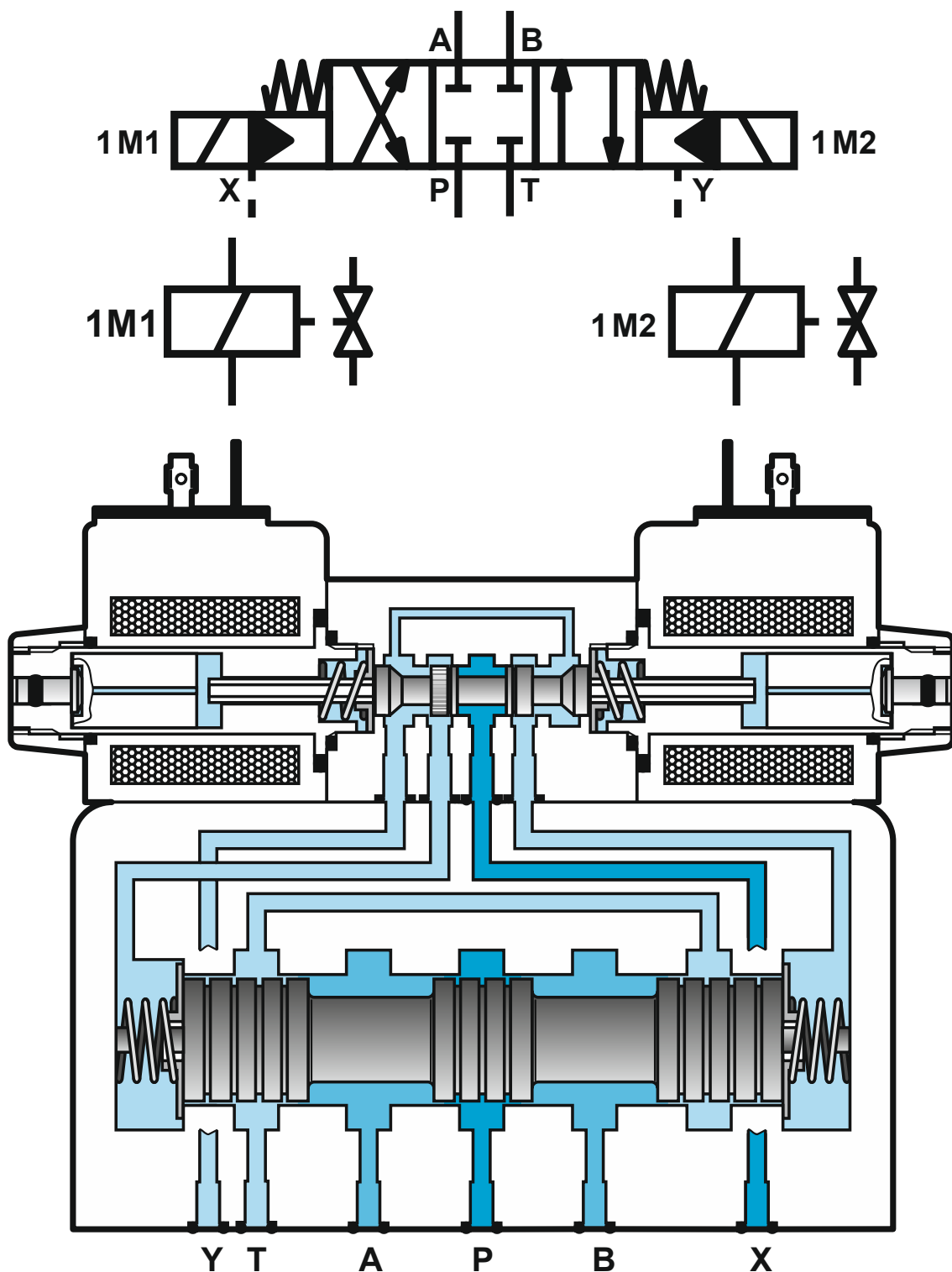
4/2-es monostabil direkt elektromos vezérrésű útváltó szelep



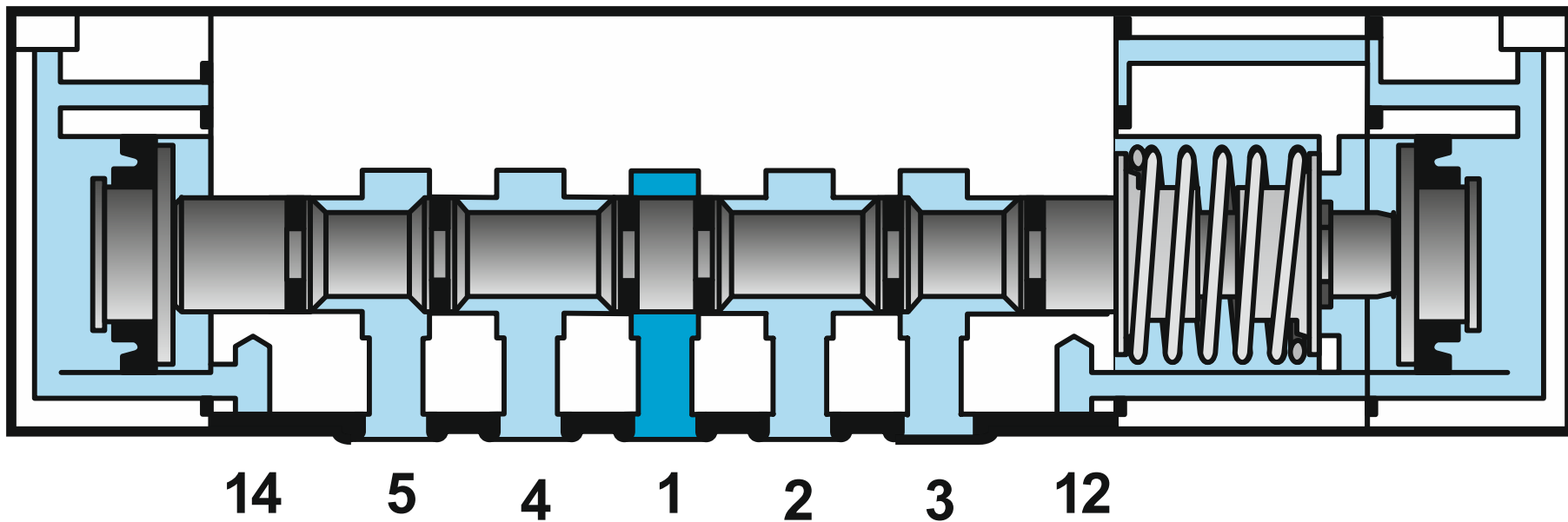
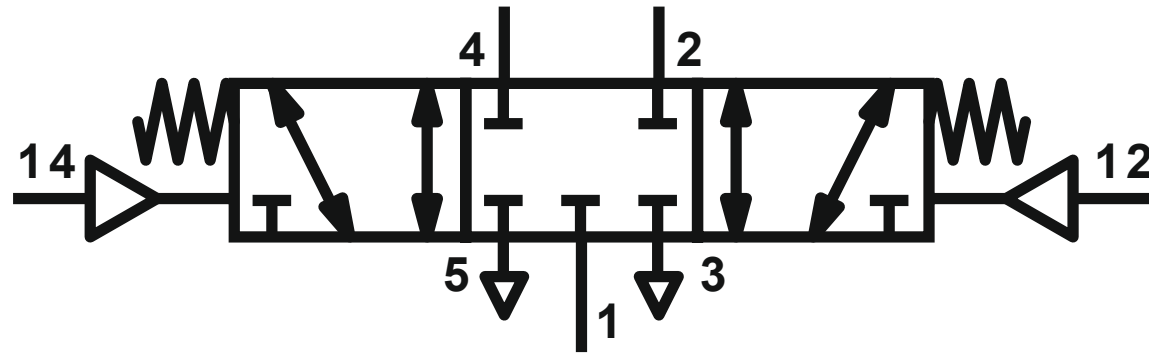
4/3-as monostabil direkt elektromos vezérrésű útváltó szelep (középállásban zárt)



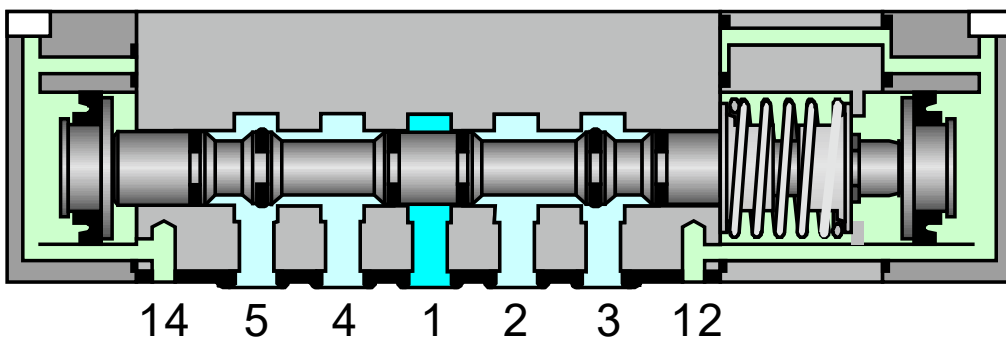
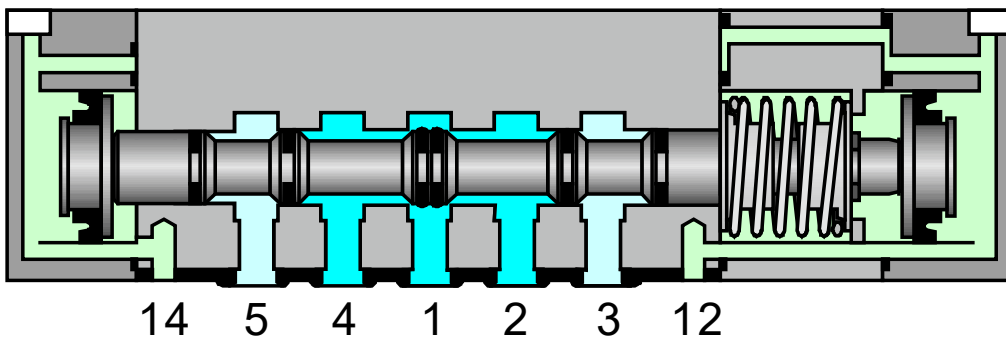
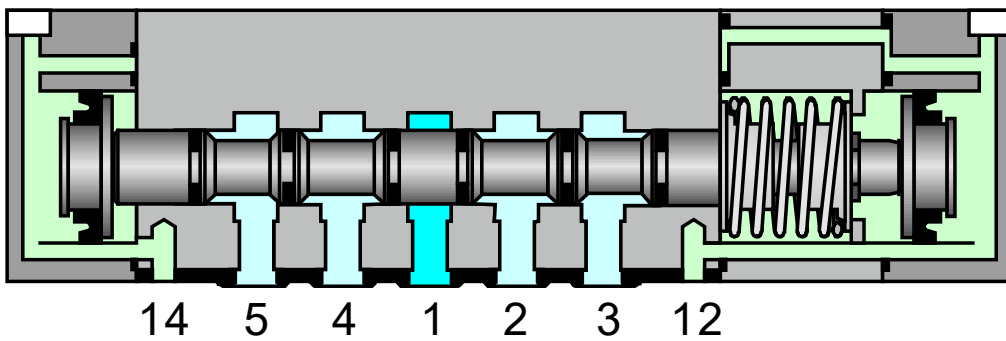
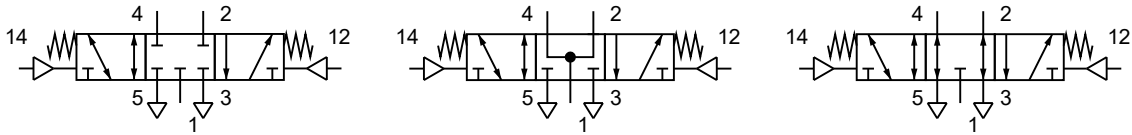
4/3-as monostabil elővezérelt elektromos vezérrésű útváltó szelep (középhelyzetben zárt)



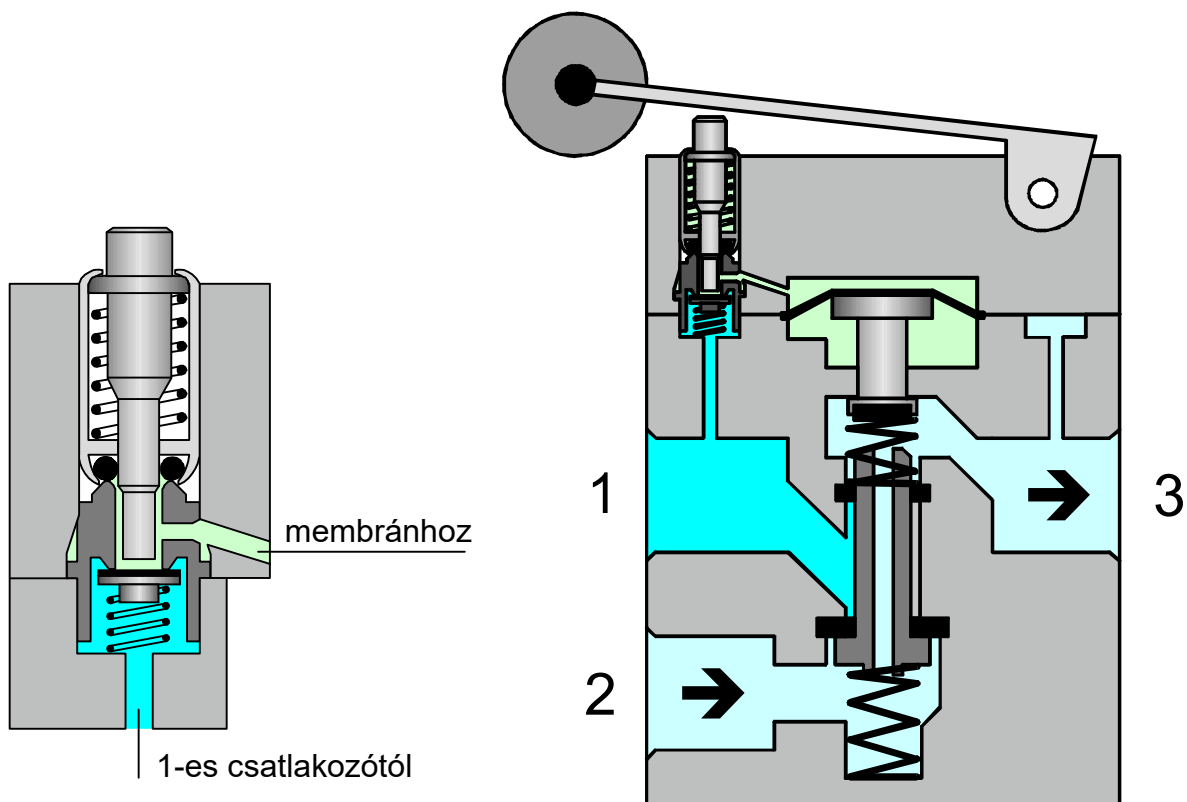
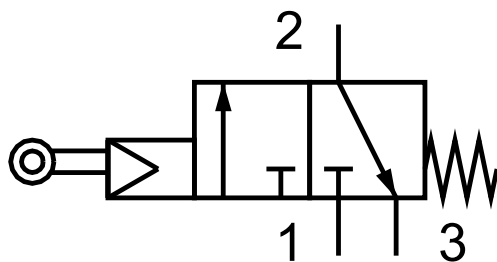
5/3-as monostabil pneumatikus működtetésű útváltó szelep (tolattyús, középhelyzetben zárt)



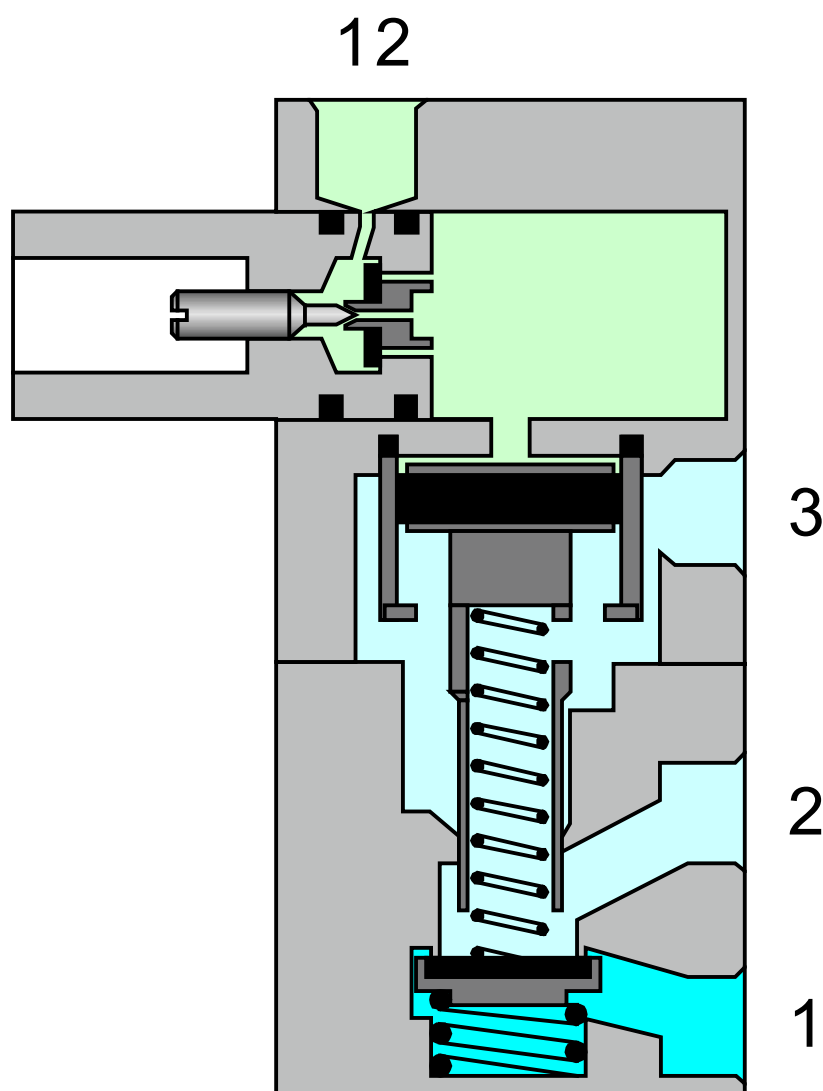
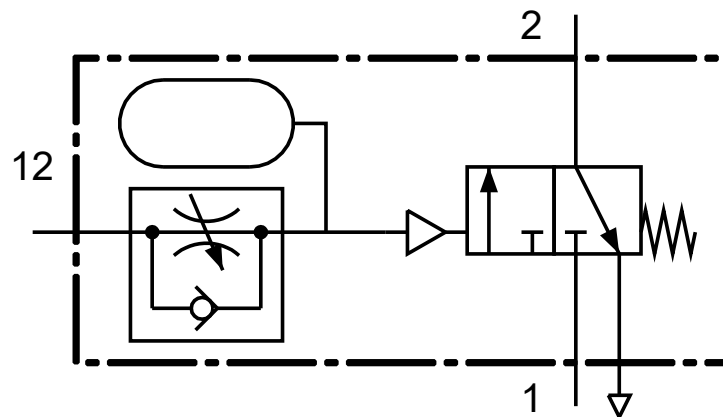
5/3-as monostabil útváltó szelepek: középhelyzetben zárt, középhelyzetben nyomás alatt, középhelyzetben leszellőztetett



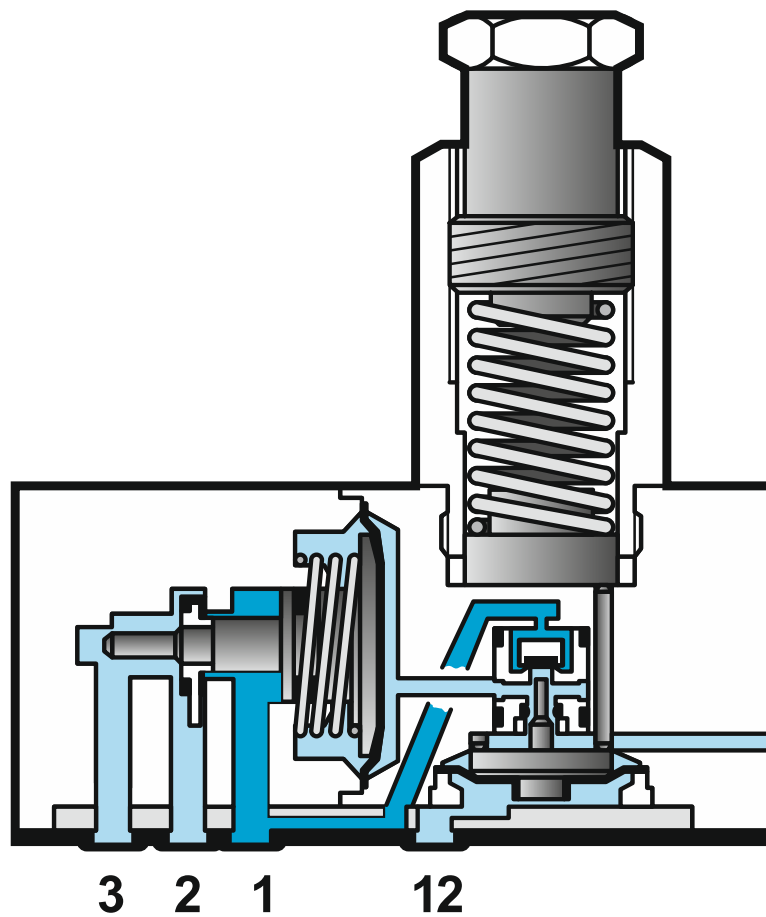
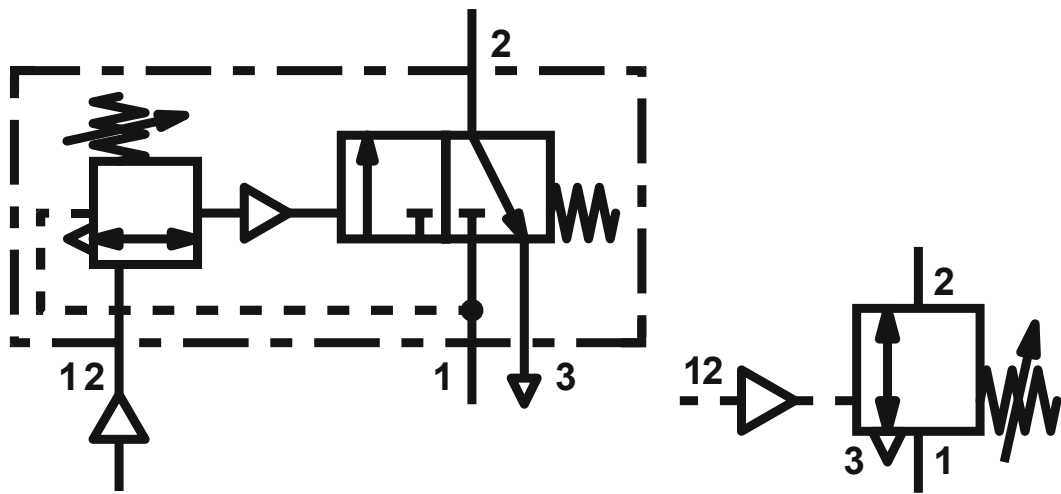
3/2-es monostabil, alaphelyzetben zárt (NC) görgős belső elővezérelt szelep (elővezérlő kinagyítva)



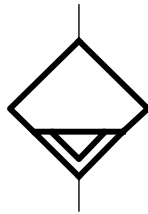
Bekapcsolás-késleltető szelepcsoport (alaphelyzetben zárt)



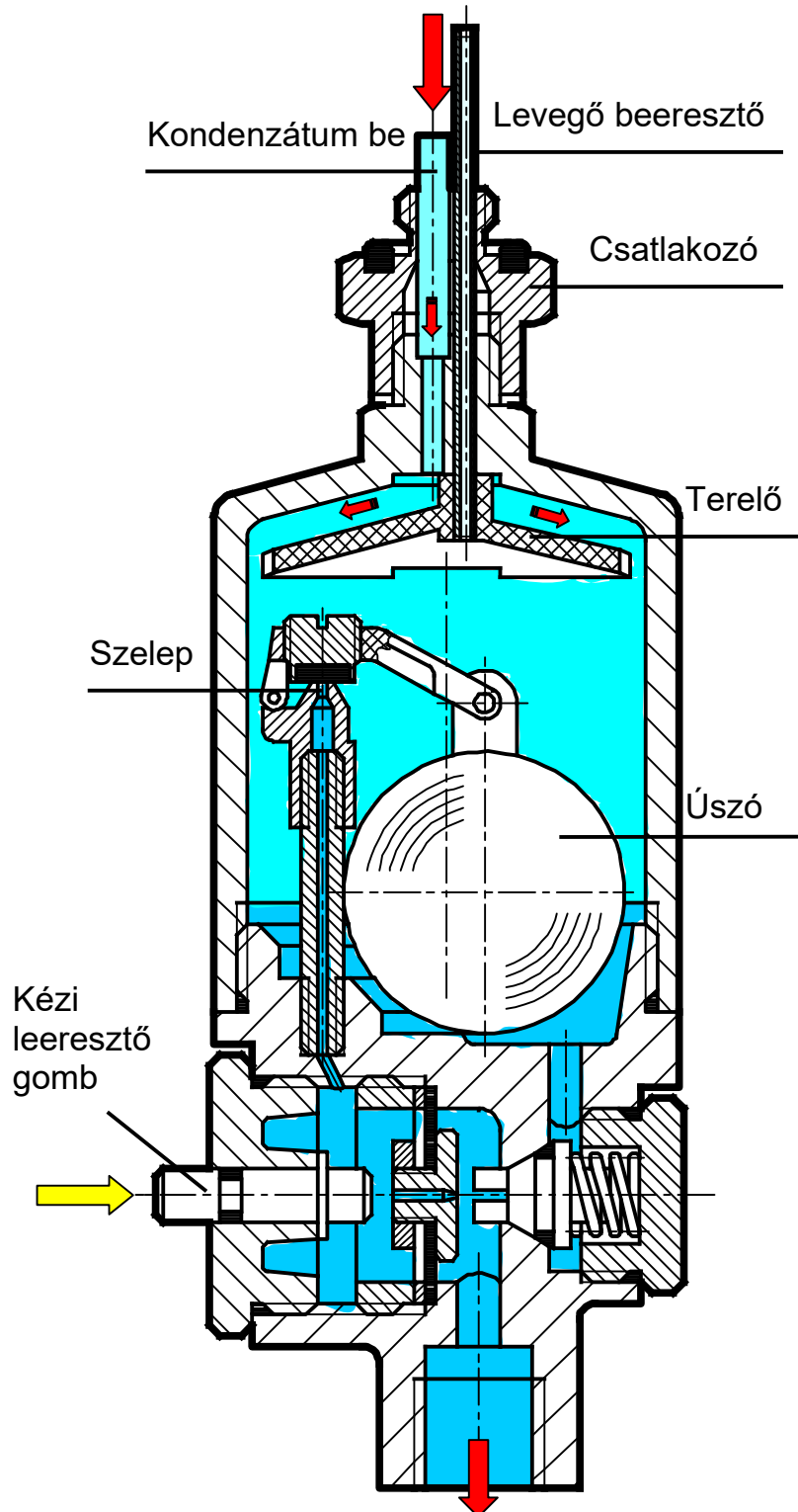
Kombinált szelep



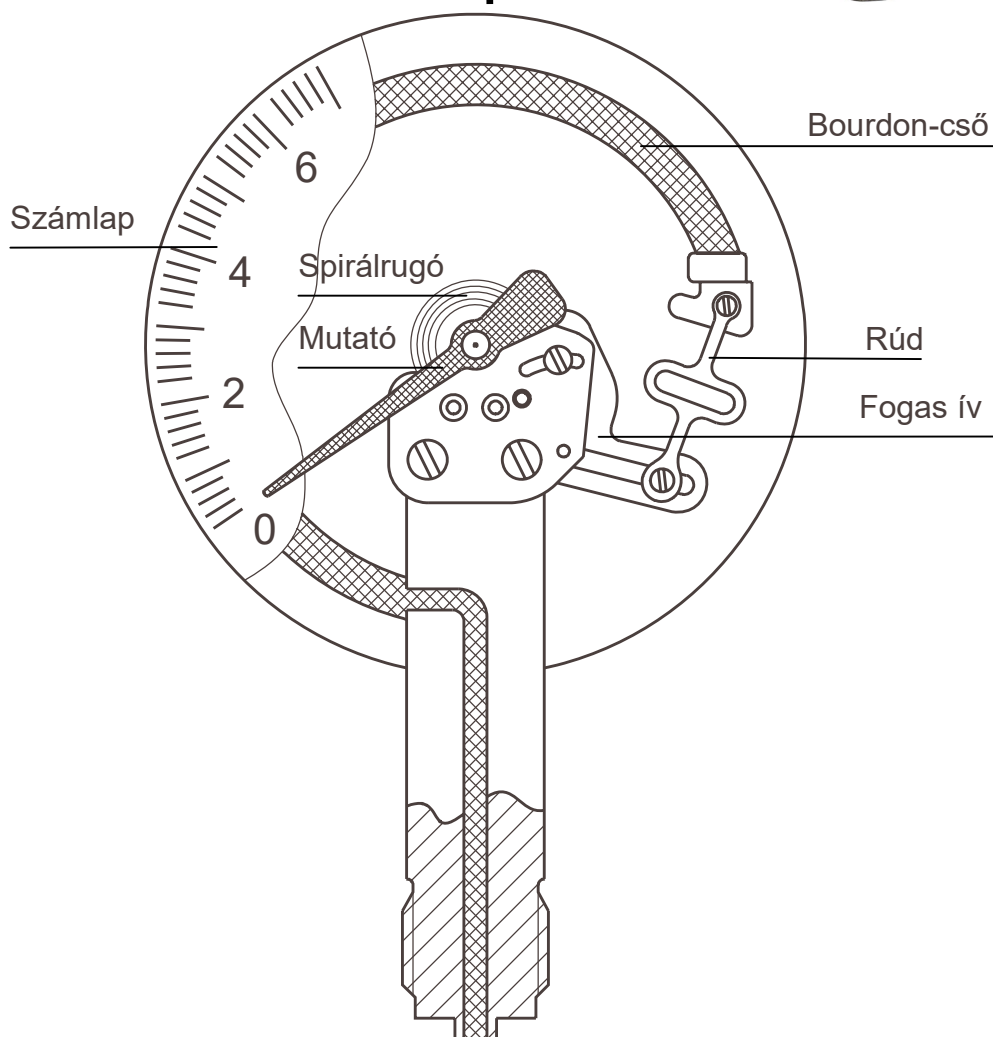
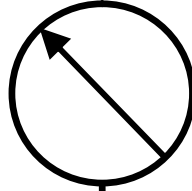
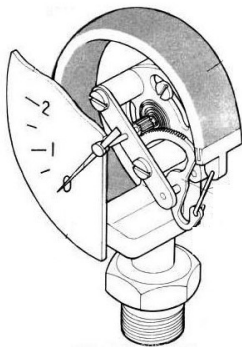
Automata vízleeresztő kiegészítés



- A vízválasztó alsó leeresztő csavarja helyére kell becsavarni.
- Aljára tömlő szerelhető, amivel elvezethető a kondenzátum.
- A kiegészítő kézi működtetéssel kisebb vízmennyiség is eltávolítható.



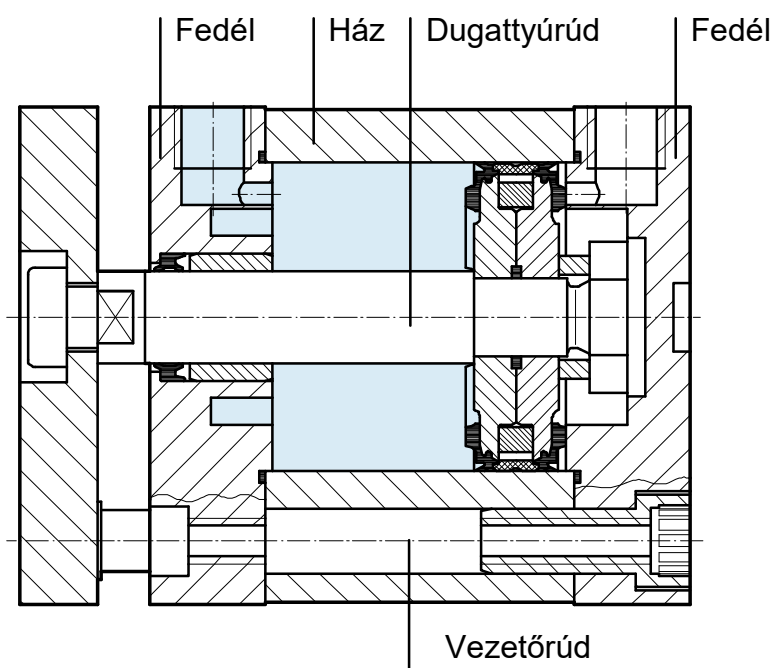
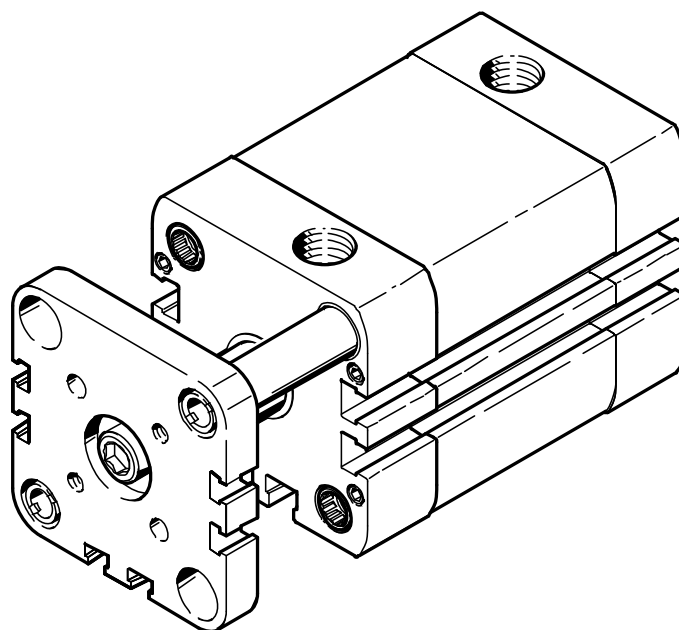
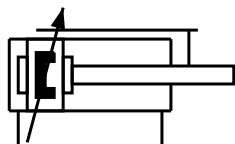
Bourdon-csöves nyomásmérő óra



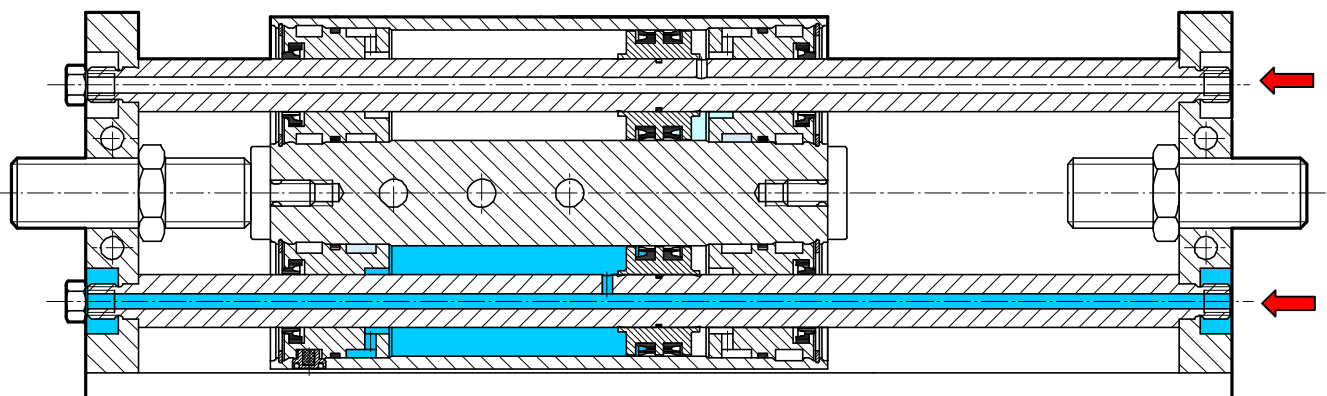
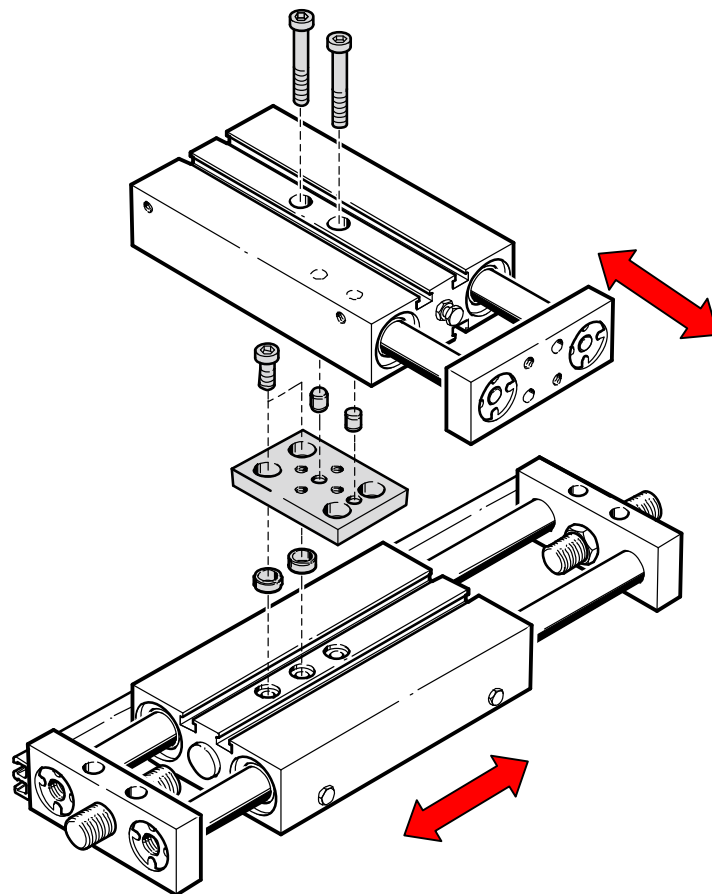
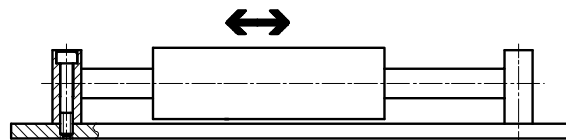
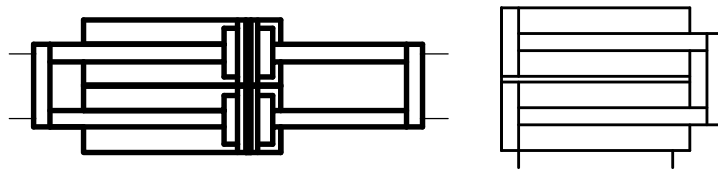
↑ Nyomás

1 bar = 14,28 psi

Elfordulás ellen vezető rudakkal biztosított, kettős működésű kompakt munkahenger

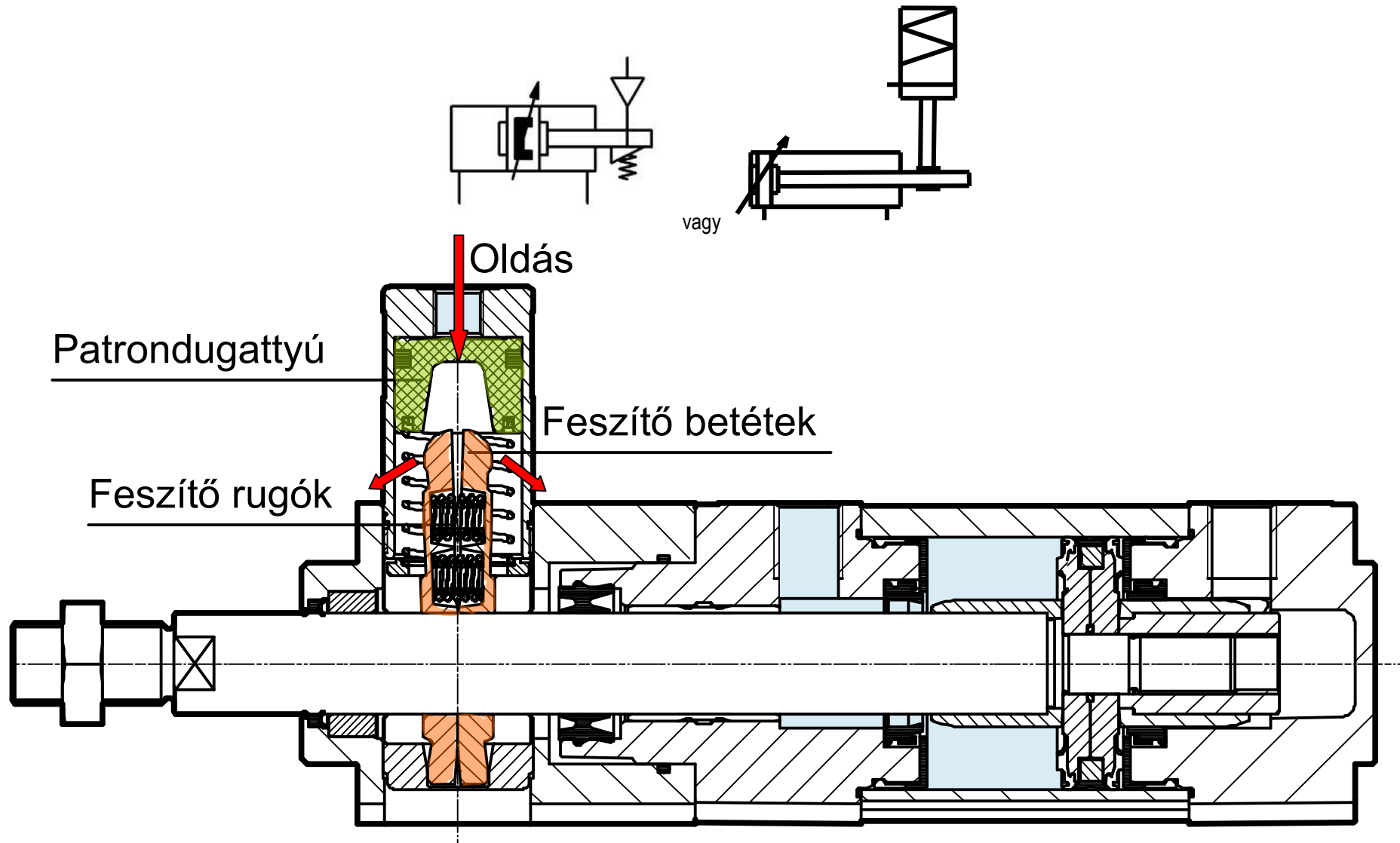


Kettős működésű hajtóművek szánszerkezettel



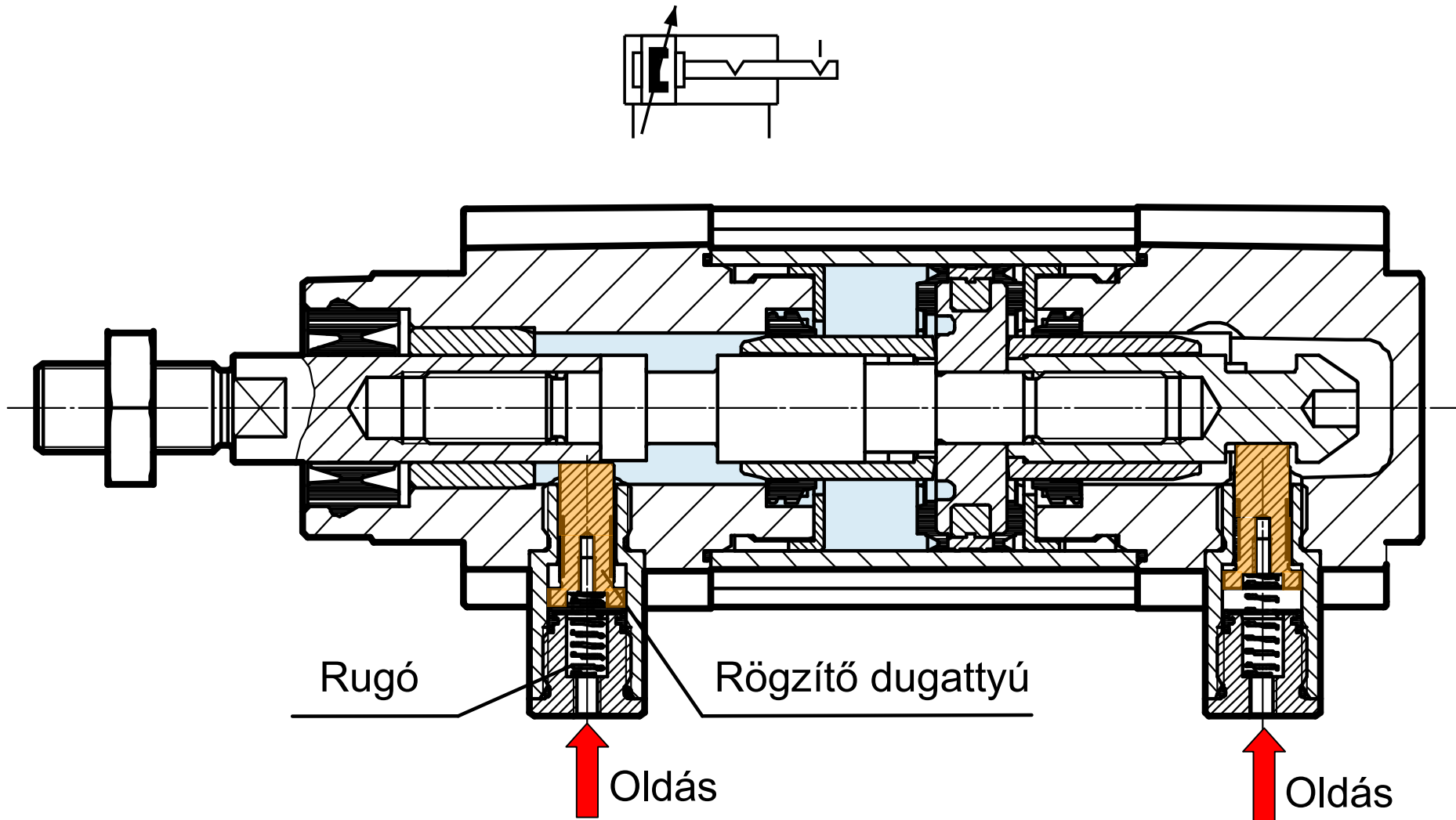
Kettős működésű munkahenger szorítópatronnal

- Nyomáskiesés esetére feszítéses reteszelés, amely a teljes löket mentén hatásos
- Oldás külső segédlevegővel történik

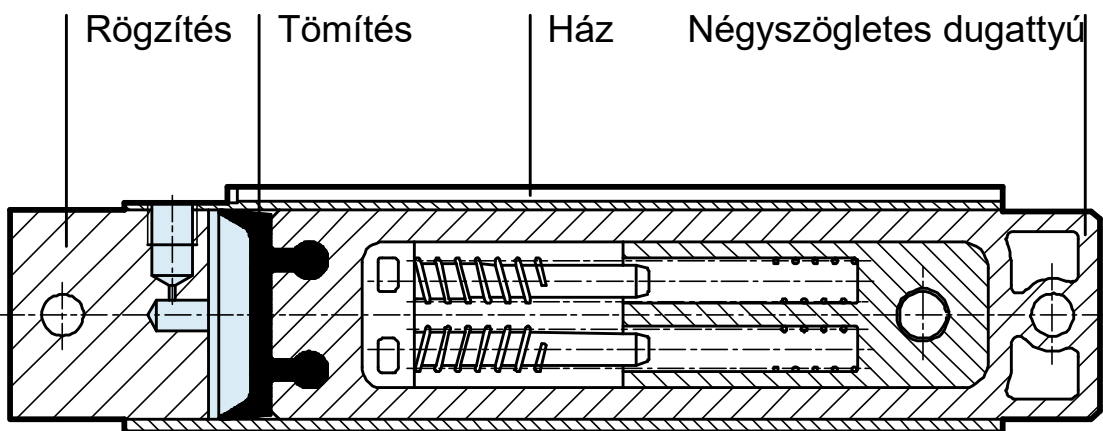
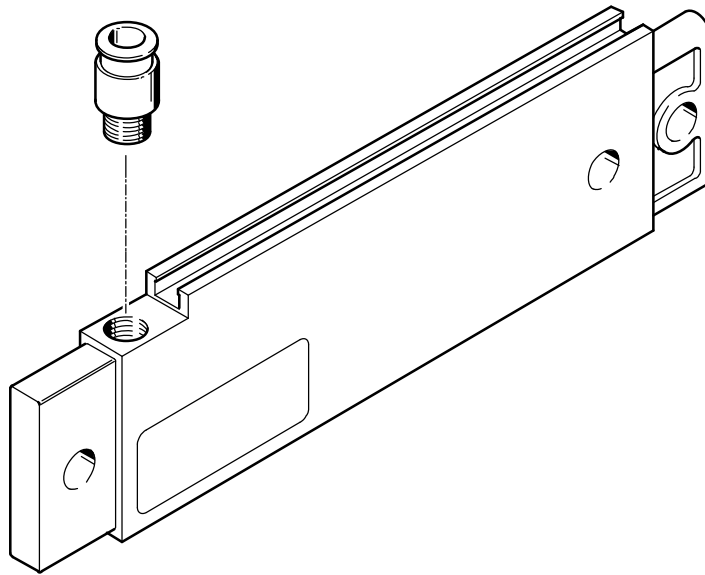
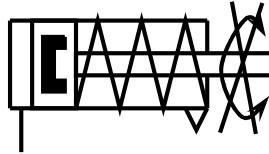


Kettős működésű munkahenger véghelyzet-rögzítéssel

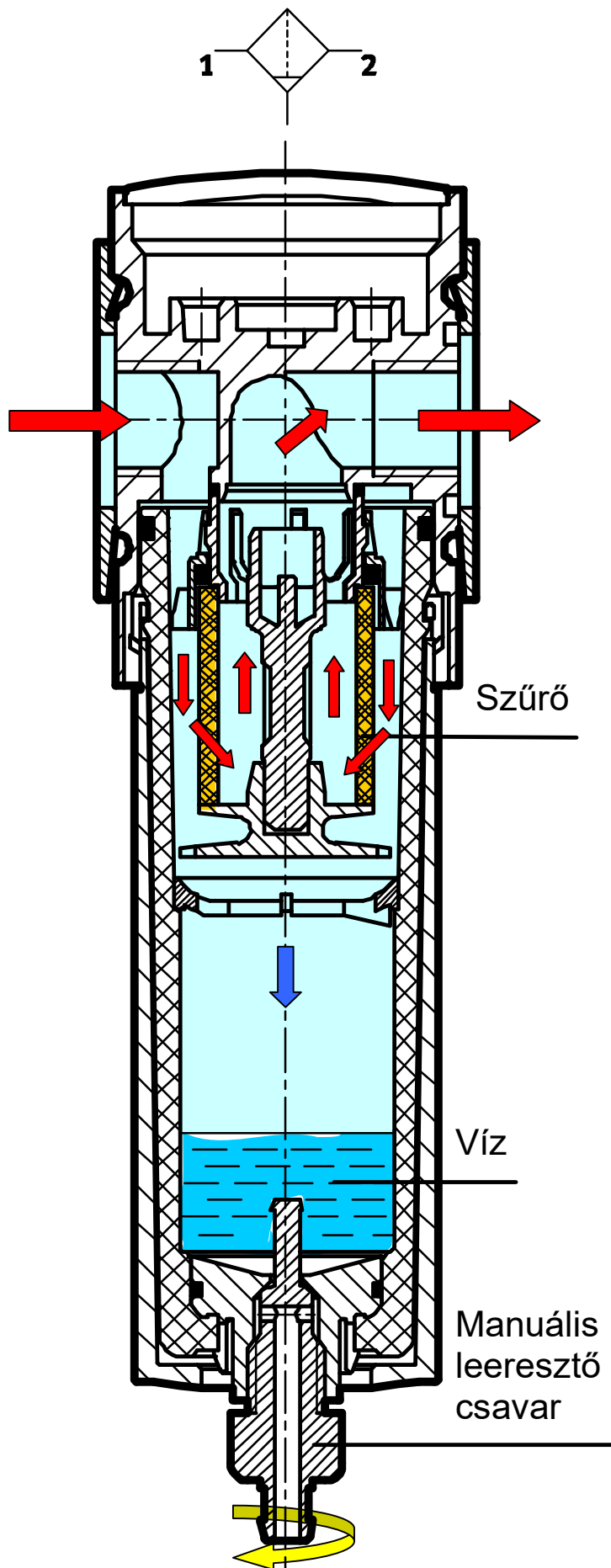
- Véghelyzetekben alakzáró rögzítésekkel az ellenőrizetlen mozgások megakadályozására.
- Oldás külső segédlevegővel történik



Egyszeres működésű munkahenger négyszögletes dugattyúval (elfordulás ellen biztosított)



Szűrő-vízleválasztó



Tömlőhenger

